

115 47 26-49



Repair Parts Manual Manual De Repuestos

YTA24V48 / 96045005400

Please read the operator's manual carefully and make sure you understand the instructions before using the machine.

Por favor lea cuidadosamente y comprenda estas instrucciones antes de usar esta maquina.



English/Spanish

HOW TO USE THIS MANUAL

This manual is designed to provide the customer with a means to identify the parts on his/her tractor when ordering repair parts. The illustrations may or may not represent the actual assemblies; therefore, it is not recommended to use this manual as a guide to assemble or disassemble the tractor. Some hardware and parts are drawn larger in order to more readily identify them.

Each tractor has its own model number.

The model number for your tractor can be found on the fender under the seat.

When ordering parts, always give the following information:

- Product - "TRACTOR"
- MODEL NUMBER - "YTA24V48" (96045005400)"
- Part Number
- Part Description

TABLE OF CONTENTS

| | |
|-----------------|-------|
| SCHEMATIC | 3 |
| ELECTRICAL..... | 4-5 |
| CHASSIS | 6-7 |
| DRIVE..... | 8-9 |
| ENGINE..... | 10-11 |
| STEERING | 12-13 |
| MOWER DECK..... | 14-15 |
| MOWER LIFT..... | 16 |
| SEAT | 17 |
| DECALS..... | 18 |

COMO UTILIZAR ESTE MANUAL

Este manual está diseñado para brindarle al comprador un medio para identificar las piezas del tractor para cuando necesite hacer el pedido de un repuesto. Las ilustraciones pueden o no representar los ensambles reales; por lo tanto, no se recomienda utilizar este manual como una guía para ensamblar o desarmar el tractor. Algunos accesorios y piezas están dibujados en tamaños más grandes para identificarlos con mayor facilidad.

Cada tractor tiene su propio número de modelo.

El número de modelo del tractor se encuentra en el guardabarros debajo del asiento.

Cuando haga el pedido de una pieza, siempre brinde la siguiente información:

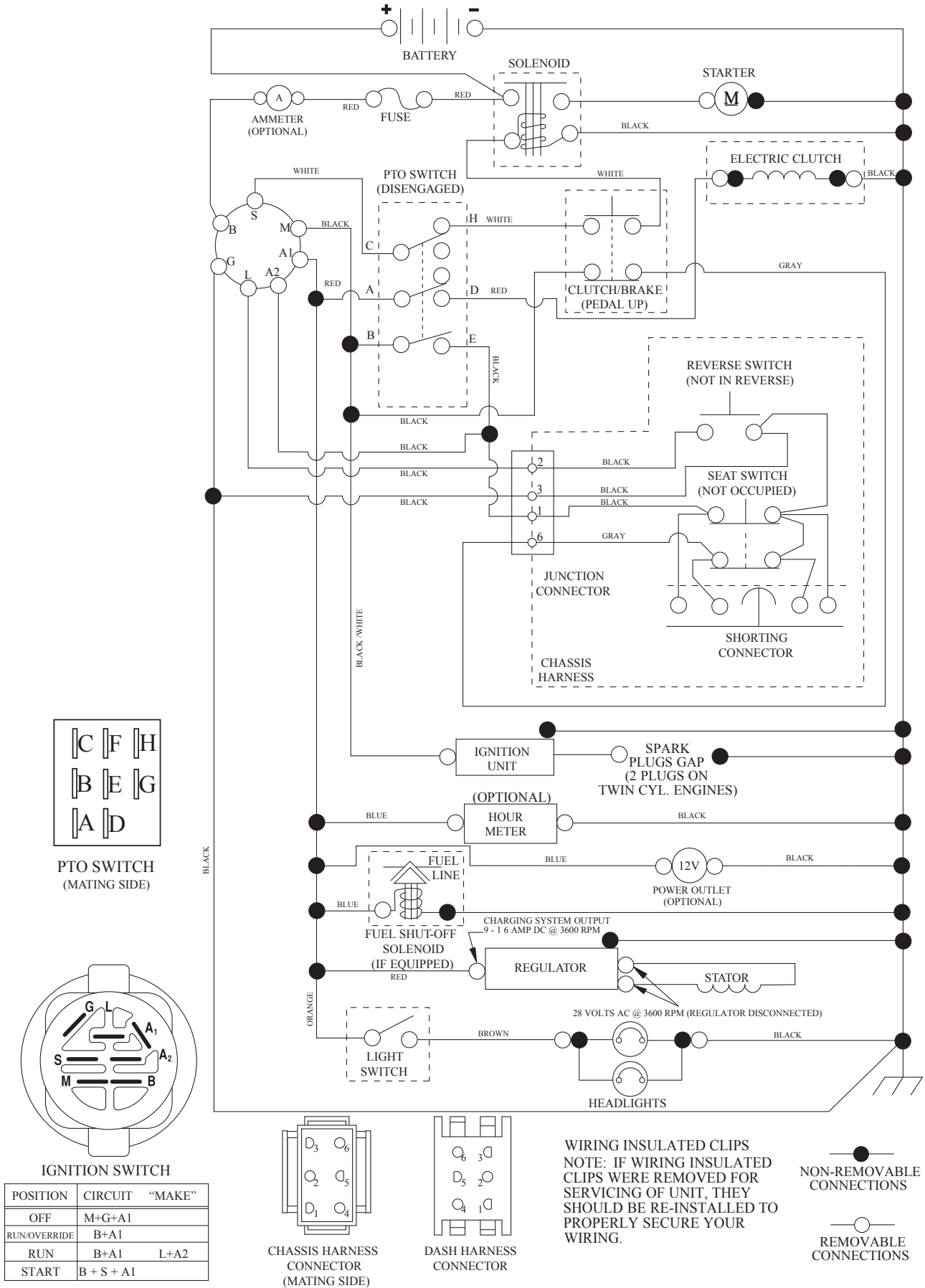
- Producto: "TRACTOR"
- NÚMERO DE MODELO: "YTA24V48"(96045005400)"
- Número de pieza
- Descripción de la pieza

ÍNDICE

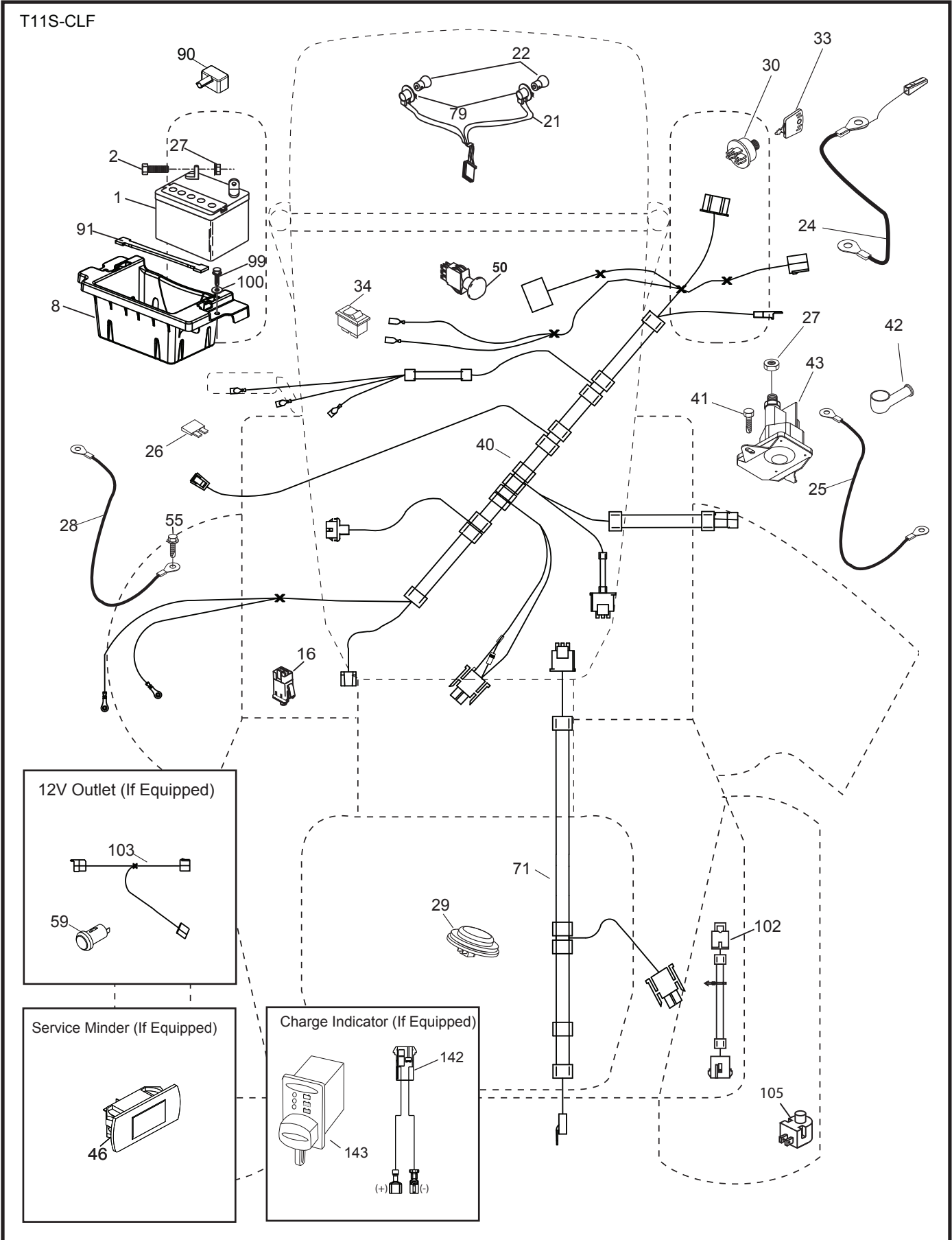
| | |
|---|-------|
| DIAGRAMA..... | 19 |
| DIAGRAMA ELÉCTRICO | 20-21 |
| CHASIS..... | 22-23 |
| TRANSMISIÓN | 24-25 |
| MOTOR..... | 26-27 |
| DIRECCIÓN | 28-29 |
| PLATAFORMA DE LA CORTADORA DE CÉSPED..... | 30-31 |
| ELEVACIÓN DE LA CORTADORA DE CÉSPED..... | 32 |
| ASIENTO..... | 33 |
| CALCOMANÍAS..... | 34 |

TRACTOR - MODEL NO. YTA24V48 (96045005400), PRODUCT NO. 960 45 00-54 SCHEMATIC

SCH12



**TRACTOR - MODEL NO. YTA24V48 (96045005400), PRODUCT NO. 960 45 00-54
ELECTRICAL**

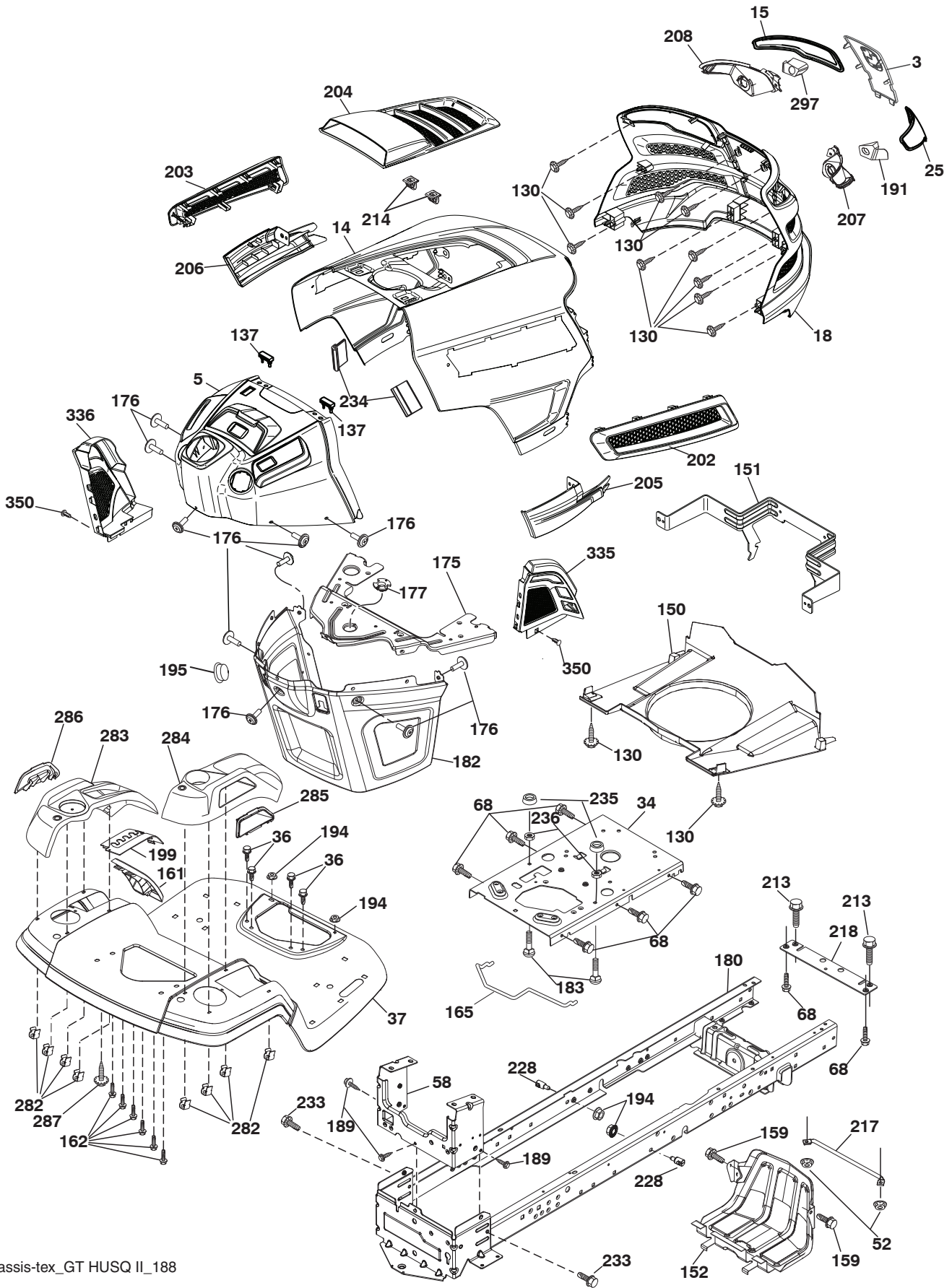


**TRACTOR - MODEL NO. YTA24V48 (96045005400), PRODUCT NO. 960 45 00-54
ELECTRICAL**

| KEY NO. | PART NO. | DESCRIPTION |
|----------------|-----------------|----------------------------------|
| 1 | 532 16 34-65 | Battery |
| 2 | 874 76 04-12 | Bolt Hex Hd 1/4-20 unc x 3/4 |
| 8 | 532 41 41-26 | Battery Box |
| 16 | 532 17 61-38 | Switch Interlock |
| 21 | 532 40 02-52 | Harness Socket Light |
| 22 | 532 00 41-52 | Bulb, Light #1156 |
| 24 | 585 55 56-01 | Cable Battery |
| 25 | 585 55 55-01 | Cable Starter |
| 26 | 532 17 51-58 | Fuse |
| 27 | 873 51 04-00 | Nut Keps Hex 1/4-20 unc |
| 28 | 532 41 65-88 | Cable Ground 21" Blk 6 Ga. |
| 29 | 532 40 15-45 | Switch Seat |
| 30 | 532 19 33-50 | Switch Ign |
| 33 | 532 41 19-33 | Key/Chain |
| 34 | 532 11 07-12 | Switch Light/Reset |
| 40 | 532 40 11-04 | Harness Ign. Dash |
| 41 | 817 72 04-08 | Screw Thd Cut 1/4-20 x 1/2 |
| 42 | 532 13 15-63 | Cover Terminal Red |
| 43 | 532 19 25-07 | Solenoid |
| 46 | 586 16 18-01 | SRV Minder/Hourmeter |
| 50 | 532 19 61-12 | Switch PTO |
| 55 | 817 06 05-12 | Screw Thdrol 5/16-18 x 3/4 |
| 71 | 532 19 42-76 | Harness Ign |
| 79 | 532 17 52-42 | Socket Asm. Bulb Twistlock |
| 90 | 532 43 53-95 | Cover Terminal Battery |
| 91 | 532 19 02-70 | Strap Battery |
| 99 | 817 67 04-12 | Screw Hexwsh Thdrol 1/4-20 x 3/4 |
| 100 | 819 09 14-16 | Washer 9/32 x 7/8 x 16 Ga. |
| 102 | 581 02 34-01 | Harness Pigtail |
| 105 | 532 40 75-68 | Switch Reverse TT Pedal Control |

NOTE: All component dimensions given in U.S. inches
1 inch = 25.4 mm

**TRACTOR - MODEL NO. YTA24V48 (96045005400), PRODUCT NO. 960 45 00-54
CHASSIS**



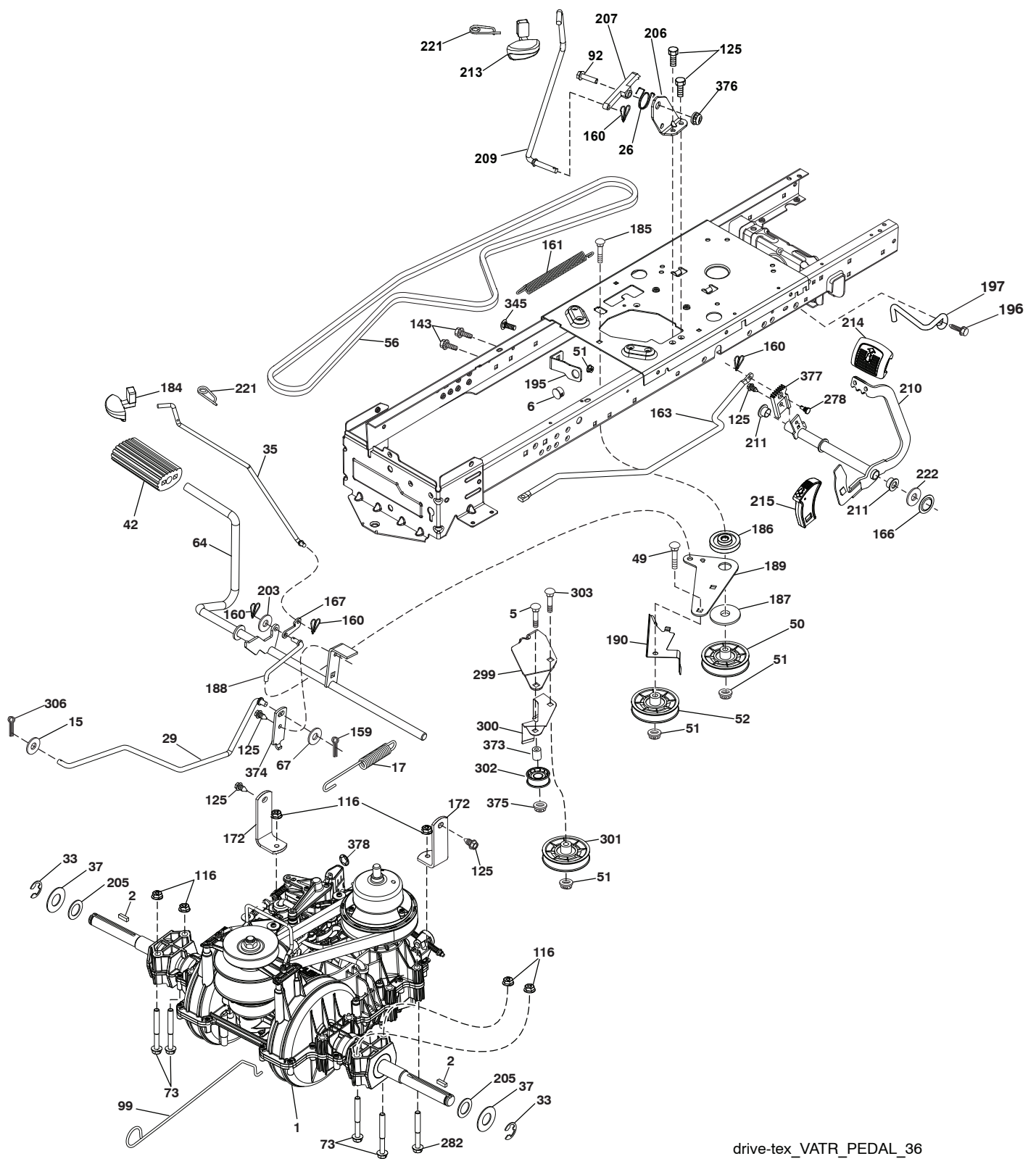
chassis-tex_GT HUSQ II_188

TRACTOR - MODEL NO. YTA24V48 (96045005400), PRODUCT NO. 960 45 00-54 CHASSIS

| KEY NO. | PART NO. | DESCRIPTION | KEY NO. | PART NO. | DESCRIPTION |
|---------|--------------|----------------------------------|---------|--------------|---------------------------------|
| 3 | 532 44 44-81 | Logo | 202 | 532 43 97-28 | Vent Side Hood RH |
| 5 | 581 46 69-03 | Dash | 203 | 532 43 97-27 | Vent Side Hood LH |
| 14 | 532 44 11-77 | Hood | 204 | 532 43 57-14 | Vent Top Hood |
| 15 | 532 43 97-33 | Lens LH | 205 | 532 43 97-30 | Trim Hood Side RH |
| 18 | 532 44 06-53 | Grille | 206 | 532 43 97-29 | Trim Hood Side LH |
| 25 | 532 44 33-85 | Lens RH | 207 | 532 43 97-34 | Bezel RH |
| 34 | 580 91 08-01 | Plate Engine | 208 | 532 43 97-35 | Bezel LH |
| 36 | 817 06 05-12 | Screw 5/16-18 x 3/4 | 213 | 874 76 05-12 | Bolt 5/16-18 unc x 3/4 |
| 37 | 532 44 11-78 | Fender | 214 | 532 19 91-45 | Clip Retainer Tinner |
| 52 | 873 68 05-00 | Nut Lock 5/16-18 | 217 | 532 40 91-67 | Rod Pivot |
| 58 | 532 41 22-80 | Drawbar Upper | 218 | 532 19 63-95 | X-Piece Hood Stop |
| 68 | 817 49 05-08 | Screw 5/16-18 x 1/2 | 228 | 532 19 51-61 | Stud Fastner |
| 130 | 532 41 63-58 | Screw #10 x 0.750 BOS Thread | 233 | 532 19 65-39 | Bolt, Shoulder |
| 137 | 532 40 75-90 | Bumper Dash | 234 | 532 40 47-42 | Bumper Hood |
| 150 | 532 43 97-74 | Air Duct | 235 | 532 40 61-29 | Spacer Fender |
| 151 | 532 40 78-07 | Bracket Pivot | 236 | 873 93 05-00 | Nut Lock 5/16-18 unc |
| 152 | 532 43 60-86 | Shield Browning | 282 | 532 41 41-10 | Clip Retainer Console |
| 159 | 817 00 06-12 | Screw hexwsh 3/8-16 x 3/4 | 283 | 532 43 98-61 | Console Asm. Decklift |
| 161 | 532 43 97-81 | Window Fuel | 284 | 532 43 98-23 | Console Asm. |
| 162 | 532 14 24-32 | Screw | 285 | 532 41 63-15 | Console Insert RH |
| 165 | 532 19 68-26 | Support Tank Rear | 286 | 532 41 63-17 | Console Insert LH |
| 175 | 532 19 63-04 | Crossmember | 287 | 817 60 04-06 | Screw Hex Washhead 1/4-20 x 3/8 |
| 176 | 532 40 07-76 | Screw 10-24 x 5/8 | 297 | 532 43 74-56 | Insert Reflective LH |
| 177 | 532 19 52-28 | Bushing Steering | 335 | 532 44 82-04 | Cover Lower Dash Close Out RH |
| 180 | 532 41 50-63 | Chassis | 336 | 532 44 53-09 | Cover Lower Dash LH |
| 182 | 532 40 68-59 | Dash Lower | 350 | 532 44 51-43 | Clip X-mas Tree |
| 183 | 874 52 05-20 | Bolt Fin Hex 5/16-18 unc x 1-1/4 | | | |
| 189 | 817 00 05-12 | Screw 5/16-18 x 3/4 | | | |
| 191 | 532 43 74-55 | Insert Reflective RH | | | |
| 194 | 873 90 05-00 | Nut Lock Hex Flange 5/16-18 | | | |
| 195 | 532 40 41-37 | Plug Hole Dash Lower | | | |
| 199 | 532 41 34-85 | Plate Deck Lift | | | |

NOTE: All component dimensions given in U.S. inches
1 inch = 25.4 mm

TRACTOR - MODEL NO. YTA24V48 (96045005400), PRODUCT NO. 960 45 00-54 DRIVE



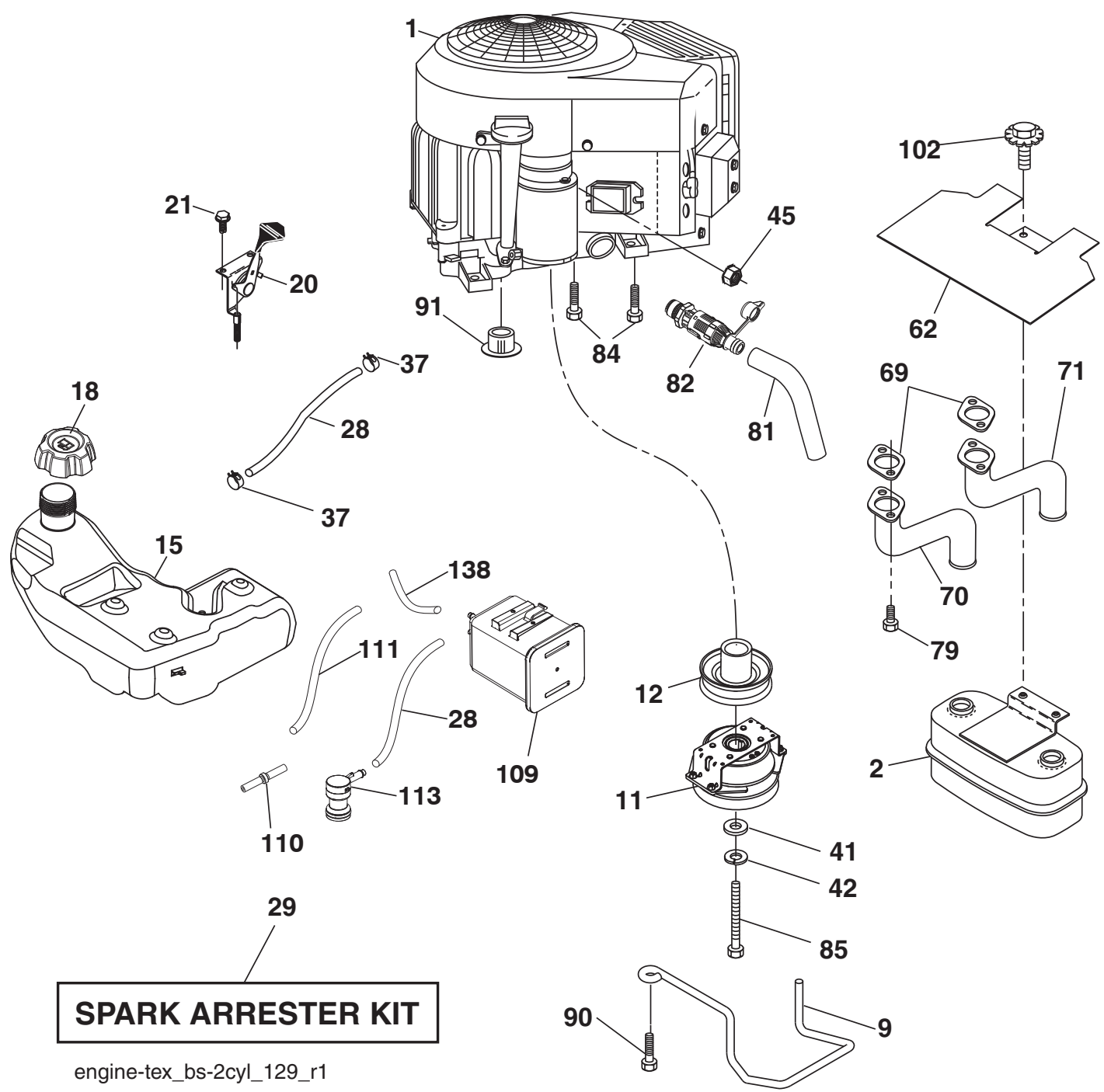
drive-tex_VATR_PEDAL_36

TRACTOR - MODEL NO. YTA24V48 (96045005400), PRODUCT NO. 960 45 00-54 DRIVE

| KEY PART NO. | NO. | DESCRIPTION | KEY PART NO. | NO. | DESCRIPTION |
|--------------|--------------|--|--------------|--------------|---------------------------------|
| 1 | --- | Transmission, Variator SD Pdeal (584973901) (Order parts from transaxle manufacturer.) | 188 | 532 19 43-23 | Link Clutch Ground Drive |
| 2 | 532 12 35-83 | Key Square | 189 | 532 19 43-17 | Bellcrank Groundrive Nstg/Nstl |
| 5 | 874 76 06-36 | Bolt Hex HS 3/8-16 unc | 190 | 532 19 43-18 | Keeper Bellcrank Drive Ground |
| 6 | 532 12 40-28 | Bushing Snap | 195 | 581 50 46-01 | Brake Bracket |
| 15 | 819 13 13-16 | Washer 13/32 x 13/16 x 16 Ga. | 196 | 817 00 06-16 | Screw 3/8-16 x 1 |
| 17 | 584 95 40-01 | Spring Brake | 197 | 585 65 86-01 | Clutch Anti-Rotation |
| 26 | 532 19 96-79 | Spring Return Cruise | 203 | 819 11 11-16 | Washer 11/32 x 11/16 x 16 Ga. |
| 29 | 584 82 31-01 | Rod Brake | 205 | 532 12 17-48 | Washer 25/32 x 1-5/8 x 16 Ga. |
| 33 | 812 00 00-01 | E-Ring | 206 | 532 44 85-96 | Bracket Mount Cruise Latch |
| 35 | 583 86 45-01 | Rod Brake Parking | 207 | 532 44 82-64 | Latch Control Cruise |
| 37 | 532 18 89-67 | Washer Harden .793 x 1.637 x 060 | 209 | 532 19 95-92 | Rod Control Cruise |
| 42 | 532 12 48-72 | Cover Pedal Blk Round | 210 | 532 44 82-70 | Weldment Pedal |
| 49 | 872 11 06-14 | Bolt Rdhd 3/8-16unc x1-3/4 Gr.5 | 211 | 532 12 01-83 | Bearing Nylon |
| 50 | 532 19 43-27 | Idler.Flat | 213 | 532 40 31-19 | Knob Control Cruise |
| 51 | 873 90 06-00 | Nut Hex Flangelock 3/8-16 | 214 | 532 42 12-63 | Pedal Forward Pad |
| 52 | 532 19 43-26 | Idler V-Groove Offset | 215 | 532 44 82-54 | Cap Pedal Reverse |
| 56 | 532 19 72-53 | Belt Drive | 221 | 532 40 31-87 | Retainer Spring Clip Handle |
| 64 | 532 44 83-53 | Shaft Asm. Pedal Brake | 222 | 879 21 20-10 | Washer 21/32 x 1-1/4 10 Ga. |
| 67 | 819 13 13-12 | Washer 13/32 x 13/16 x 12 Ga. | 278 | 580 36 91-01 | Bolt Cruise Variator |
| 73 | 874 49 05-44 | Bolt Hex Flghd 5/16-18 Gr. 5 | 282 | 874 49 05-48 | Screw Thdrol 5/16-18 x 3 |
| 92 | 874 76 05-20 | Bolt Fin. Hx 5/16-18 unc x 1.25 | 299 | 532 41 56-83 | Bracket Mount Idler |
| 99 | 532 43 59-35 | Rod Bypass | 300 | 532 41 56-81 | Keeper Idler Rear |
| 116 | 873 90 05-00 | Nut Lock Hex Flange 5/16-18 unc | 301 | 532 41 56-80 | Pulley Idler V-Groove |
| 125 | 817 00 05-12 | Screw 5/16-18 x 3/4 Smgml Tap/Bl | 302 | 581 42 05-01 | Pulley Idler Flat 2.0 Od |
| 143 | 817 49 05-08 | Screw Thdrol 5/16-18 x 1/2 Tytt | 303 | 872 11 06-18 | Bolt Rdhd Sgnk 3/8-16 x 2-1/4 |
| 159 | 876 02 04-12 | Pin Cotter 1/8 x 3/4 | 306 | 876 02 04-16 | Pin Cotter 1/8 x 1 |
| 160 | 532 16 94-84 | Retainer Clip(M) Dia. 290 | 345 | 872 11 06-06 | Bolt Rdhd Sgnk 3/8-16 x 1 Gr. 5 |
| 161 | 532 10 57-09 | Spring Return Clutch 6.75 | 373 | 581 46 18-01 | Spacer Idler |
| 163 | 587 84 79-02 | Rod Control Pedal | 374 | 581 47 52-01 | Bracket Brake Arm |
| 166 | 532 42 91-64 | Nut Push .625 | 375 | 873 68 06-00 | Nut Crownlock 3/8-16 unc |
| 167 | 532 40 52-57 | Latch Brake Parking | 376 | 532 42 65-89 | Nut Flange Hx 5/16-18 |
| 172 | 583 97 42-01 | Strap Torque LH/RH | 377 | 584 30 34-01 | Gear Sector Control Cruise |
| 184 | 587 65 37-01 | Handle Parking Brake | 378 | 584 28 77-01 | Nut Push 8 mm |
| 185 | 872 11 06-22 | Bolt Rdhd 3/8-16 unc x 2-3/4 Gr.5 | | | |
| 186 | 532 19 43-21 | Spacer Retainer | | | |
| 187 | 819 13 32-10 | Washer 13/32 x 2 x 10 Ga. | | | |

NOTE: All component dimensions given in U.S. inches
1 inch = 25.4 mm

**TRACTOR - MODEL NO. YTA24V48 (96045005400), PRODUCT NO. 960 45 00-54
ENGINE**



TRACTOR - MODEL NO. YTA24V48 (96045005400), PRODUCT NO. 960 45 00-54 ENGINE

| KEY NO. | PART NO. | DESCRIPTION |
|---------|--------------|---|
| 1 | ----- | Engine Briggs Model No. 44R877-0001-G1 (585910001) (Order parts from engine manufacturer.) |
| 2 | 532 44 59-62 | Muffler |
| 9 | 584 91 16-01 | Keeper Belt Engine |
| 11 | 587 24 16-01 | Clutch Electric |
| 12 | 532 40 29-80 | Pulley Engine |
| 15 | 532 41 41-51 | Tank Fuel |
| 18 | 585 12 48-01 | Cap Fuel |
| 20 | 587 24 25-01 | Control Throttle/Choke |
| 21 | 532 41 63-58 | Screw #10 x 0.750 BOS Thread |
| 28 | 532 40 11-35 | Fuel Line |
| 29 | 532 13 71-80 | Spark Arrester Kit |
| 37 | 532 12 34-87 | Clamp Hose |
| 41 | 532 12 61-97 | Washer 1-1/2 OD x 15/32 ID x .250 |
| 42 | 810 04 07-00 | Washer Lock 7/16 |
| 45 | 873 51 04-00 | Nut Keps Hex 1/4-20 unc |
| 62 | 532 43 40-17 | Shield Heat Muffler |
| 69 | 532 16 53-91 | Gasket |
| 70 | 581 88 11-01 | Tube Exhaust LH |
| 71 | 581 88 10-01 | Tube Exhaust RH |
| 79 | 532 18 39-06 | Screw Socket Head 5/16-18 x 1 |
| 81 | 532 14 84-56 | Tube Drain Oil Easy |
| 82 | 532 42 82-87 | Valve Oil Drain |
| 84 | 817 06 06-20 | Screw 3/8-16 x 1-1/4 |
| 85 | 532 17 99-53 | Bolt 7/16-20 x 3.75 Gr. |
| 90 | 817 00 06-16 | Screw 3/8-16 x 1 |
| 91 | 532 18 79-45 | Bushing |
| 102 | 817 00 05-12 | Screw 5/16-18 x 3/4 |
| 109 | 532 41 41-14 | Canister Carbon Filter |
| 110 | 532 41 41-18 | Valve Anti-Slosh |
| 111 | 532 41 41-19 | Purge Line Carb |
| 113 | 532 41 41-27 | Valve Slant Cartridge |
| 138 | 532 42 07-18 | Purge Line Rear |

NOTE: All component dimensions given in U.S. inches
1 inch = 25.4 mm

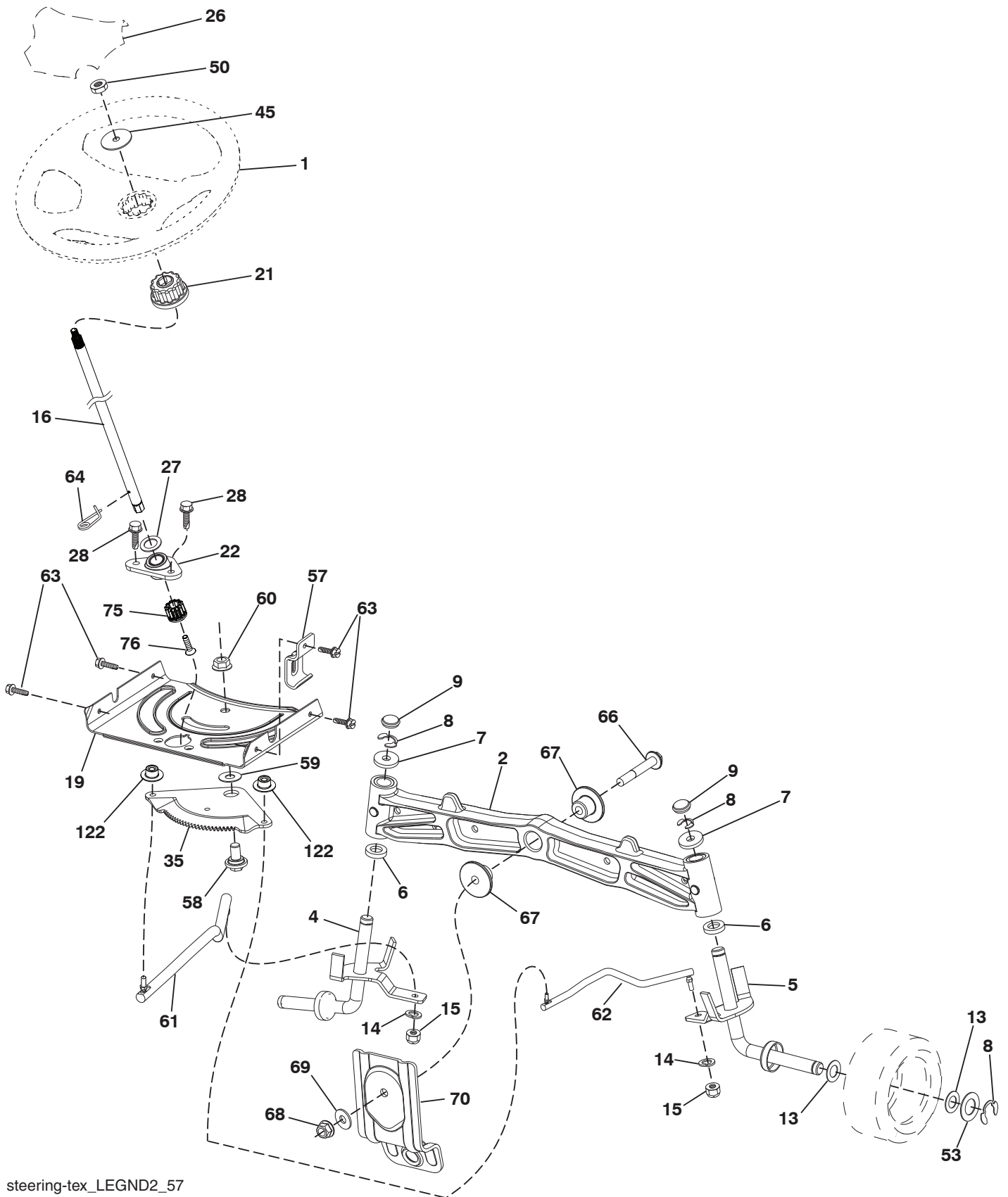
For engine service and replacement parts, call the toll free number for your engine manufacturer listed below:

Briggs & Stratton 1-800-233-3723

Engine Power Rating Information

The gross power rating for individual gas engine models is labeled in accordance with SAE (Society of Automotive Engineers) code J1940 (Small Engine Power & Torque Rating Procedure), and rating performance has been obtained and corrected in accordance with SAE J1995 (Revision 2002-05). Torque values are derived at 3060 RPM; horsepower values are derived at 3600 RPM. Actual gross engine power will be lower and is affected by, among other things, ambient operating conditions and engine-to-engine variability. Given both the wide array of products on which engines are placed and the variety of environmental issues applicable to operating the equipment, the gas engine will not develop the rated gross power when used in a given piece of power equipment (actual "on-site" or net power). This difference is due to a variety of factors including, but not limited to, accessories (air cleaner, exhaust, charging, cooling, carburetor, fuel pump, etc.), application limitations, ambient operating conditions (temperature, humidity, altitude), and engine-to-engine variability. Due to manufacturing and capacity limitations, Briggs & Stratton may substitute an engine of higher rated power for this Series engine.

TRACTOR - MODEL NO. YTA24V48 (96045005400), PRODUCT NO. 960 45 00-54
STEERING ASSEMBLY



steering-tex_LEGND2_57

**TRACTOR - MODEL NO. YTA24V48 (96045005400), PRODUCT NO. 960 45 00-54
STEERING ASSEMBLY**

| KEY NO. | PART NO. | DESCRIPTION |
|----------------|-----------------|-------------------------------------|
| 1 | 532 43 97-40 | Wheel, Steering |
| 2 | 532 19 59-68 | Axle Asm., Front |
| 4 | 532 40 30-87 | Spindle Asm., LH |
| 5 | 532 40 30-88 | Spindle Asm., RH |
| 6 | 532 12 49-31 | Bearing, Race Thrust Harden |
| 7 | 532 12 17-48 | Washer 25/32 x 1-5/8 x 16 Ga. |
| 8 | 812 00 00-29 | Ring, Clip #T5304-75 |
| 9 | 532 12 12-32 | Cap, Spindle |
| 13 | 532 12 17-49 | Washer 25/32 x 1-1/4 x 16 Ga. |
| 14 | 810 04 06-00 | Washer, Lock Hvy Hlcl Spr 3/8 |
| 15 | 873 54 06-00 | Nut, Crown Lock 3/8-24 unf |
| 16 | 587 01 60-02 | Steering Shaft |
| 19 | 532 19 47-29 | Plate Steering |
| 21 | 586 84 02-01 | Adapter Wheel Steering |
| 22 | 585 02 98-02 | Bearing |
| 26 | 532 43 97-43 | Insert, Wheel Steering |
| 27 | 819 21 16-16 | Washer |
| 28 | 817 00 06-12 | Screw 3/8-16 x 3/4 |
| 35 | 532 19 47-32 | Gear, Sector Plate |
| 45 | 587 01 64-01 | Washer 3/8 ID 2-3/8 OD 12 Ga. PLTD |
| 50 | 873 90 06-00 | Nut Lock Flg 3/8-16 unc |
| 53 | 532 18 89-67 | Washer Hardened .793 x 1.637 x .060 |
| 57 | 532 19 72-46 | Bracket Upstop |
| 58 | 532 19 47-47 | Bolt Shoulder Sector Pivot CFM |
| 59 | 532 19 47-48 | Washer Thrust Sector Steering |
| 60 | 873 97 10-00 | Nut Flange Lock 5/8-11 |
| 61 | 532 19 47-40 | Draglink, LH |
| 62 | 532 19 47-41 | Draglink, RH |
| 63 | 817 00 05-12 | Screw 5/16-18 x 3/4 |
| 64 | 532 19 98-49 | Retainer Clip Spring Steering |
| 66 | 871 02 07-48 | Bolt Hex Fghd 7/16-14 x 3 Serr |
| 67 | 532 19 47-37 | Bushing PM Front Axle |
| 68 | 873 90 07-00 | Nut Lock Flange 7/16-14 Gr. 5 |
| 69 | 532 19 91-62 | Washer 1.5 x .505 x .118 |
| 70 | 585 33 88-01 | Bracket Deck Susp. Front |
| 75 | 580 68 37-02 | Pinion |
| 76 | 580 68 36-01 | Screw Head Sock |
| 122 | 532 44 49-62 | Cap Gear Sector |

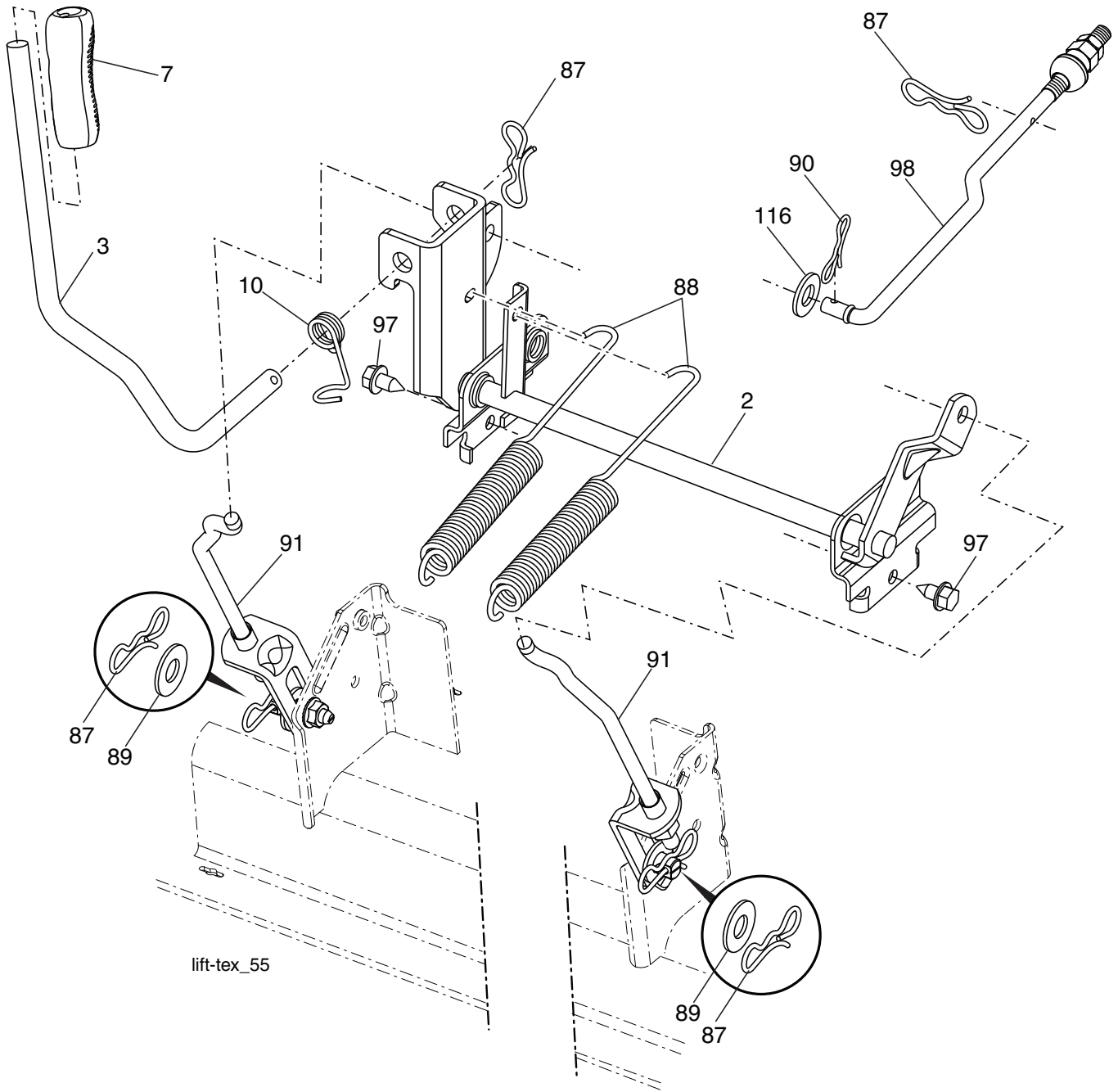
NOTE: All component dimensions given in U.S. inches
1 inch = 25.4 mm

**TRACTOR - MODEL NO. YTA24V48 (96045005400), PRODUCT NO. 960 45 00-54
MOWER DECK**

| KEY NO. | PART NO. | DESCRIPTION | KEY NO. | PART NO. | DESCRIPTION |
|---------|--------------|--------------------------------|---------|--------------|---|
| 1 | 532 44 12-93 | Deck Weldment Mower | 54 | 872 11 06-12 | Bolt Carr. Sh 3/8-16 x 1-1/2 Gr. 5 |
| 6 | 532 19 72-48 | Cover Mandrel LH | 97 | 532 17 85-15 | Washer Hardened |
| 7 | 587 45 24-01 | Cover Mandrel RH | 98 | 532 19 61-05 | Spring Drive |
| 9 | 583 97 07-01 | Torque Strap | 113 | 872 11 05-08 | Bolt Rdhd Sqnk 5/16-18 x 3/4 |
| 11 | 532 18 00-54 | Blade High Lift | 114 | 532 19 74-51 | Rod Tension Relief |
| 12 | 532 40 48-51 | Rod Anti-Sway | 116 | 532 19 34-06 | Bolt, Shoulder |
| 13 | 532 18 72-91 | Shaft Asm. w/Lower Bearing | 117 | 532 17 48-73 | Gauge Wheel |
| 14 | 532 18 72-81 | Housing, Mandrel | 120 | 819 13 20-12 | Washer 13/32 x 1-1/4 x 12 Ga. |
| 15 | 532 11 04-85 | Bearing, Ball, Mandrel | 122 | 532 18 75-57 | Bushing Tension Relief |
| 16 | 819 13 13-12 | Washer 13/32 x 13/16 x 12 Ga. | 185 | 873 90 07-00 | Nut Lock Flange 7/16-14 Gr. 5 |
| 17 | 872 11 05-05 | Bolt 5/16-18 x 5/8 | 187 | 532 19 51-61 | Stud Fastener w/"D" Anti-Rotation |
| 18 | 872 14 05-05 | Bolt RdHd 5/16-18 unc x 5/8 | 188 | 873 90 05-00 | Nut Lock Hex Flange |
| 19 | 532 19 42-08 | Pin Cotter 5/16 Bow Tie Lock | 189 | 532 19 51-85 | Arm Susp. Mower Rear |
| 20 | 532 17 43-78 | Baffle Vortex | 190 | 532 19 65-39 | Bolt Shoulder |
| 21 | 873 68 05-00 | Nut, Crownlock 5/16-18 unc | 194 | 874 49 07-36 | Bolt 7/16 - 24 |
| 22 | 532 17 44-93 | Stripper Mandrel | 209 | 817 00 05-12 | Screw 5/16-18 x 3/4 |
| 24 | 532 10 53-04 | Cap Sleeve | 241 | 532 15 29-27 | Screw TT #10-32.5 3/8 Flange |
| 25 | 532 17 81-02 | Spring, Torsion | 242 | 532 41 55-98 | Port, Washout |
| 26 | 532 11 04-52 | Nut, Push | 250 | 585 31 80-05 | Plate Reinforcement Front |
| 27 | 532 18 17-07 | Deflector Shield | 251 | 585 32 24-05 | Plate Reinforcement Side Bolt |
| 29 | 532 13 14-91 | Rod, Hinge | 252 | 539 10 98-00 | Carriage Bolt 1/4-20 x 1 Gr. 5 |
| 32 | 532 15 35-32 | Pulley, Mandrel | 253 | 873 90 04-00 | Nut Hx Flg 1/4-20 unc |
| 33 | 532 40 02-34 | Nut, Flg. Top Lock | -- | 532 41 64-05 | Coupling Quick Connect |
| 36 | 584 30 93-01 | Screw Sems 7/16-20 x 1 Hx Hd | -- | 587 12 54-01 | Mandrel Assembly (Includes housing (key #14), shaft assembly (key #13), and bearing only (key #15) - pulley/nut/washer and blade bolt/washers not included) |
| 39 | 532 19 73-80 | Pulley, Idler, 4.50 Hub | -- | 532 41 82-23 | Replacement Mower, Complete |
| 41 | 584 95 39-01 | Bolt Hx Wshr. Hd 3/8-18 x 1.19 | | | |
| 43 | 532 19 60-65 | Arm, Idler | | | |
| 46 | 532 13 77-29 | Screw, Thdroll. 1/4-20 x 5/8 | | | |
| 47 | 532 19 72-42 | Belt Deck Drive | | | |
| 48 | 532 19 73-79 | Pulley Idler 4.50 RAW | | | |
| 49 | 873 90 06-00 | Nut, Lock Flg. 3/8-16 unc | | | |
| 50 | 817 49 06-36 | Screw TT 3/8-16 x 2-1/4 | | | |
| 52 | 532 19 31-97 | Pulley Idler 48" Primary | | | |

NOTE: All component dimensions given in U.S. inches
1 inch = 25.4 mm

**TRACTOR - MODEL NO. YTA24V48 (96045005400), PRODUCT NO. 960 45 00-54
MOWER LIFT**



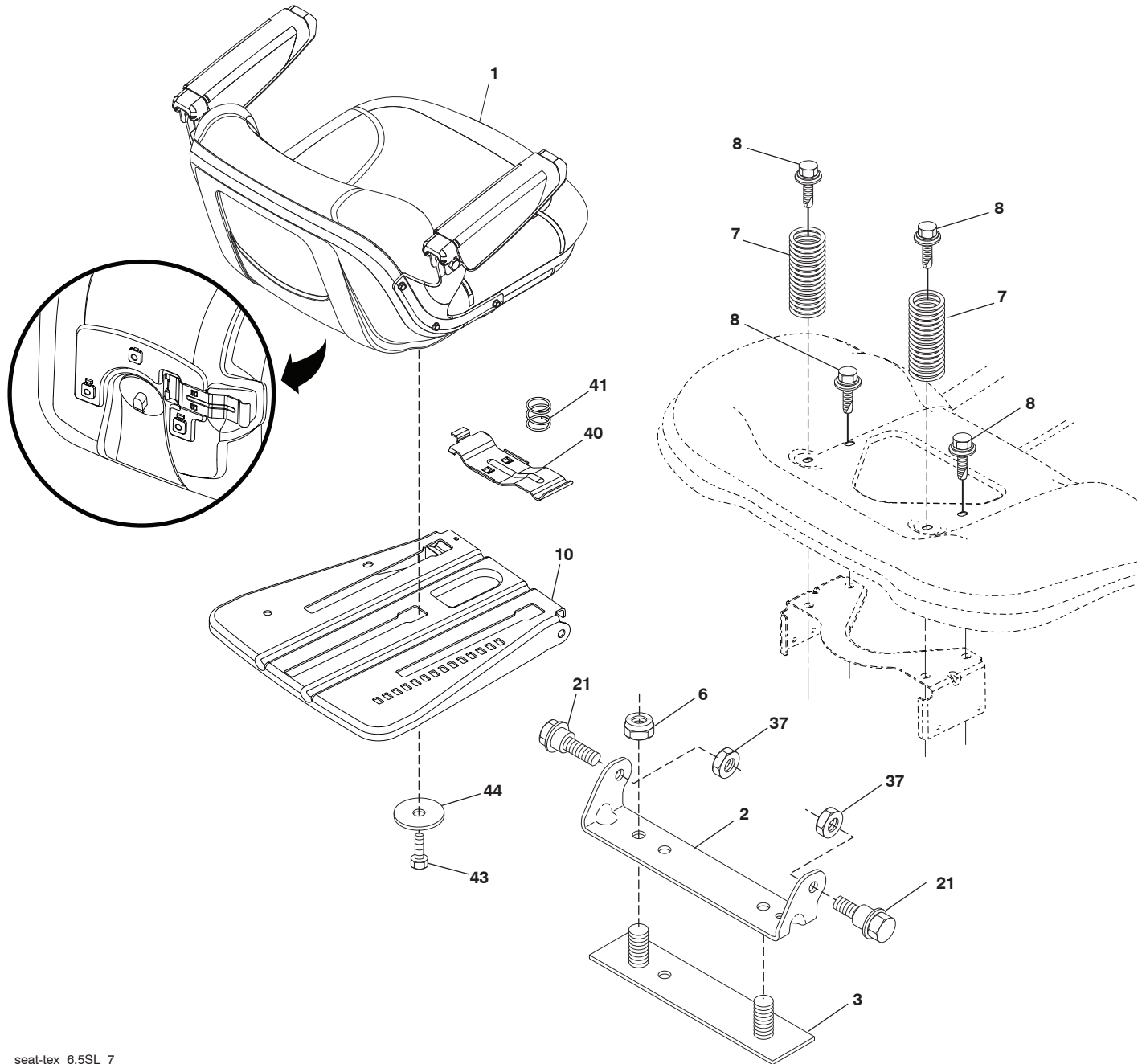
lift-tex_55

| KEY NO. | PART NO. | DESCRIPTION |
|---------|--------------|------------------------------|
| 2 | 532 42 20-27 | Shaft Asm. Cross, Lift |
| 3 | 532 19 52-31 | Lever Asm., Lift |
| 7 | 580 96 23-01 | Grip, Lever |
| 10 | 532 19 63-14 | Spring Torsion |
| 87 | 532 19 42-09 | Pin Cotter 7/16 Bow Tie Lock |
| 88 | 532 41 07-10 | Spring Lift Assist |
| 89 | 819 19 19-12 | Washer Clear Zinc |
| 90 | 532 19 42-08 | Pin Cotter 5/16 Bow Tie Lock |

| KEY NO. | PART NO. | DESCRIPTION |
|---------|--------------|-------------------------------|
| 91 | 532 19 51-81 | Link Lift Susp Mower Rear |
| 97 | 817 00 06-12 | Screw 3/8-16 x .75 |
| 98 | 532 19 52-64 | Link Lift Susp. Front Mower |
| 116 | 819 15 15-16 | Washer 15/32 x 15/16 x 16 Ga. |

NOTE: All component dimensions given in U.S. inches
1 inch = 25.4 mm

**TRACTOR - MODEL NO. YTA24V48 (96045005400), PRODUCT NO. 960 45 00-54
SEAT ASSEMBLY**



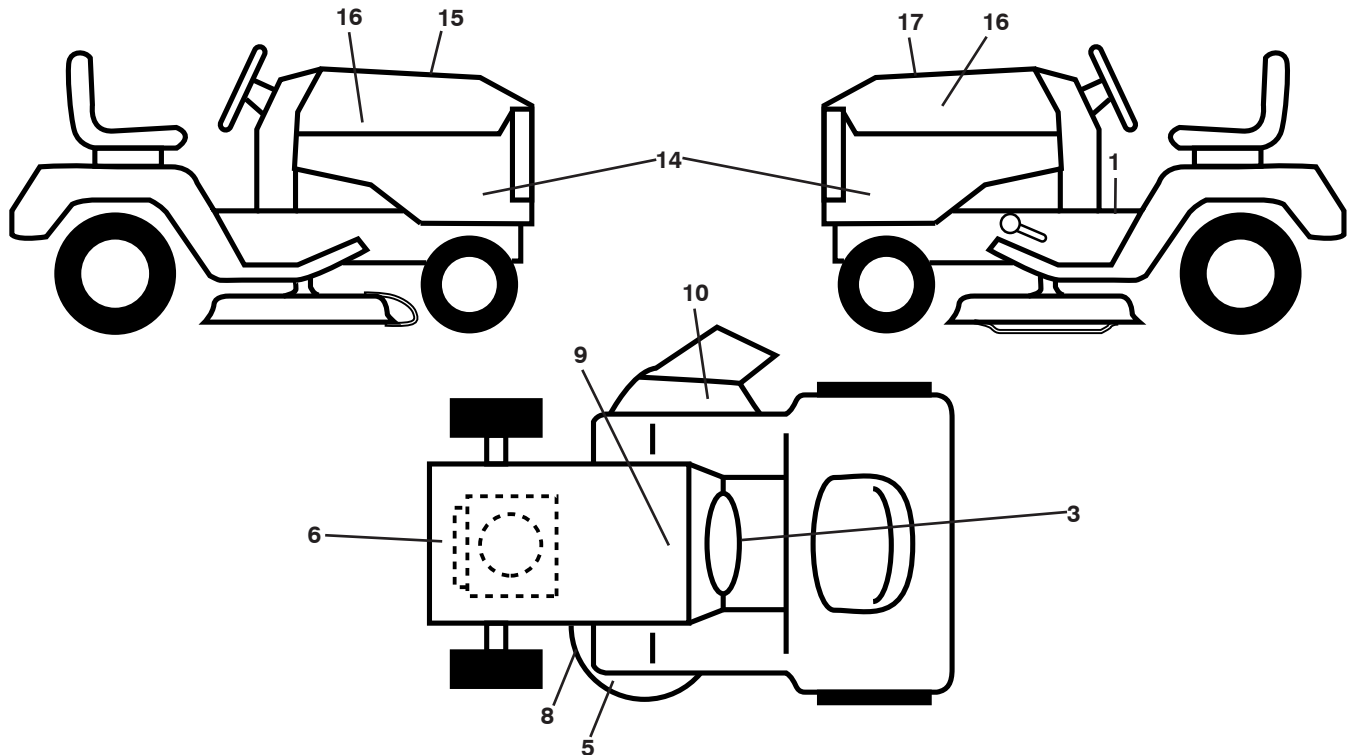
seat-tex_6.5SL_7

| KEY NO. | PART NO. | DESCRIPTION |
|---------|--------------|-------------------------------|
| 1 | 532 44 32-63 | Seat |
| 2 | 532 18 01-66 | Bracket Pivot Fender |
| 3 | 532 14 06-75 | Strap, Asm Fender |
| 6 | 873 80 06-00 | Nut, Lock w/Ins. 3/8-16 unc |
| 7 | 587 61 33-01 | Spring, Seat Cprsn |
| 8 | 532 17 18-77 | Bolt 5/16-18 unc x 3/4 w/Sems |
| 10 | 532 19 69-77 | Pan, Seat |
| 21 | 587 90 78-01 | Bolt, Shoulder 5/16-18 x 5/8 |

| KEY NO. | PART NO. | DESCRIPTION |
|---------|--------------|-------------------------------|
| 37 | 873 80 05-00 | Nut, Lock 5/16-18 unc |
| 40 | 532 19 76-61 | Handle Slide Seat |
| 41 | 532 19 82-00 | Spring Latch Seat |
| 43 | 874 76 06-12 | Bolt 3/8-16 x 3/4 |
| 44 | 819 13 38-12 | Washer 13/32 x 2-3/8 x 12 Ga. |

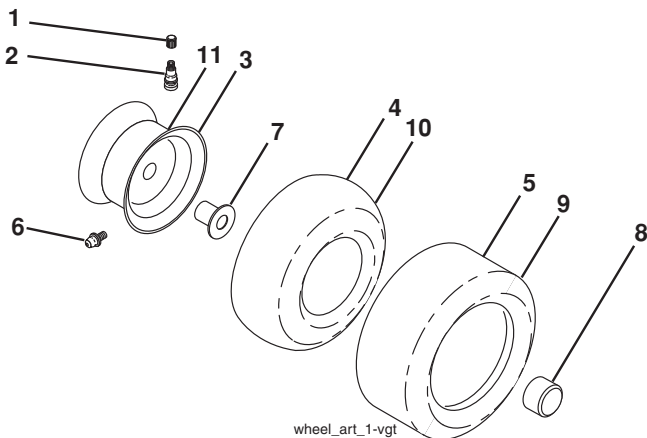
NOTE: All component dimensions given in U.S. inches
1 inch = 25.4 mm

**TRACTOR - MODEL NO. YTA24V48 (96045005400), PRODUCT NO. 960 45 00-54
DECALS**



| KEY NO. | PART NO. | DESCRIPTION | KEY NO. | PART NO. | DESCRIPTION |
|---------|--------------|-------------------------------|---------|--------------|---|
| 1 | 586 71 38-01 | Decal, Operator's | 17 | 501 11 23-01 | Decal, Replacement |
| 3 | 532 42 41-02 | Decal, Warning Spark Arrestor | -- | 581 72 48-01 | Decal, Bypass |
| 5 | 581 72 45-02 | Decal, Caution | -- | 580 88 58-01 | Decal, E85 Warning |
| 6 | 585 93 73-01 | Decal, Engine H.P. | -- | 532 43 96-81 | Pad, Footrest, LH |
| 8 | 581 58 00-02 | Decal, Mower Sch. | -- | 532 43 96-82 | Pad, Footrest, RH |
| 9 | 532 14 50-05 | Decal, Battery Dnge/Poi | -- | 115 47 25-49 | Manual, Operator's (English/Spanish) |
| 10 | 584 90 46-01 | Decal, Deflect. Warning | -- | 115 47 26-49 | Manual, Parts (English/Spanish) |
| 14 | 501 20 41-01 | Decal, Panel Side | -- | 587 71 00-26 | Manual, Quick Start Guide (English/Spanish) |
| 15 | 532 42 38-29 | Decal, Cust. Resp. | | | |
| 16 | 581 62 73-01 | Decal, Hood Logo | | | |

WHEELS AND TIRES



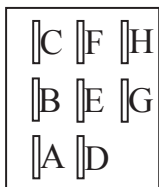
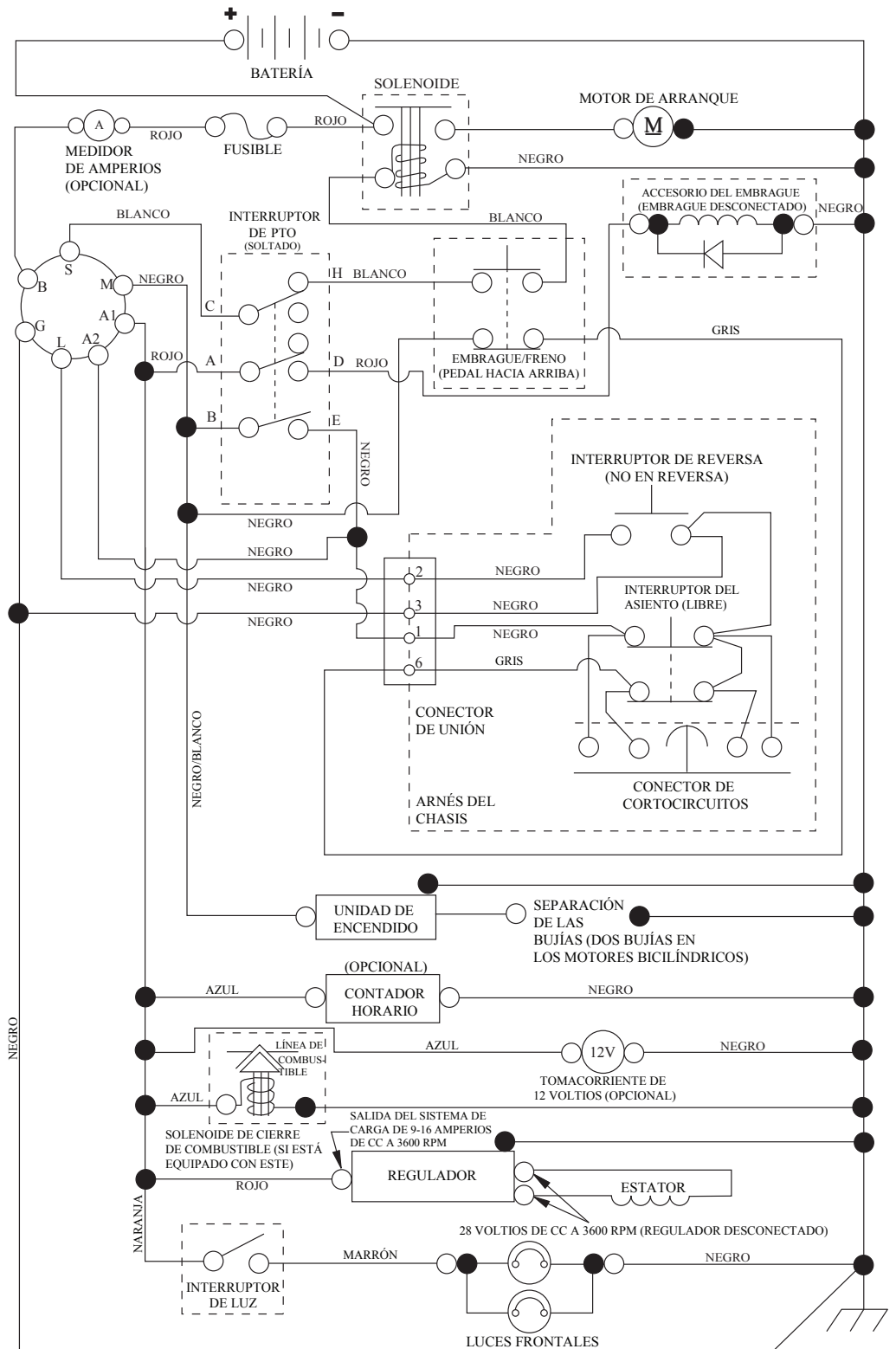
| KEY NO. | PART NO. | DESCRIPTION |
|---------|--------------|------------------------------------|
| 1 | 532 05 91-92 | Cap, Valve, Tire |
| 2 | 532 06 51-39 | Stem, Valve |
| 3 | 532 13 83-36 | Rim Assembly, Front |
| 4 | 532 05 99-04 | Tube, Front (Service Item Only) |
| 5 | 532 10 62-22 | Tire, Front 15 x 6-6 |
| 6 | 532 12 49-57 | Fitting, Grease (Front Wheel Only) |
| 7 | 532 12 49-59 | Bearing, Flange (Front Wheel Only) |
| 8 | 532 17 50-39 | Cap, Axle |
| 9 | 532 13 84-68 | Tire, Rear 20 x 8-8 |
| 10 | 532 12 49-26 | Tube, Rear (Service Item Only) |
| 11 | 532 13 83-37 | Rim Assembly, Rear |
| -- | 532 14 43-34 | Sealant, Tire (10 oz. Tube) |

NOTE: All component dimensions given in U.S. inches
1 inch = 25.4 mm

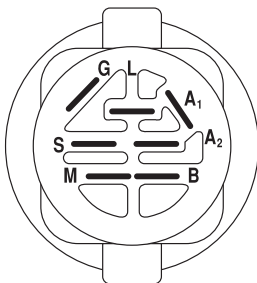
TRACTOR - MODELO NO. YTA24V48 (96045005400), PRODUCT NO. 960 45 00-54

DIAGRAMA

SCH12-s

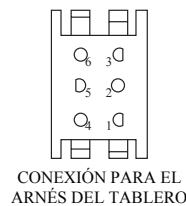


INTERRUPTOR DE PTO (CARA DE ACOPLAMIENTO)



INTERRUPTOR DE ENCENDIDO

| POSICIÓN | CIRCUITO «MARCA» |
|--------------------------------|------------------|
| APAGADO | M+G+A1 |
| PONER EN FUNCIONAMIENTO/ANULAR | B+A1 |
| PONER EN FUNCIONAMIENTO | B+A1 L+A2 |
| ARRANCAR | B + S + A1 |

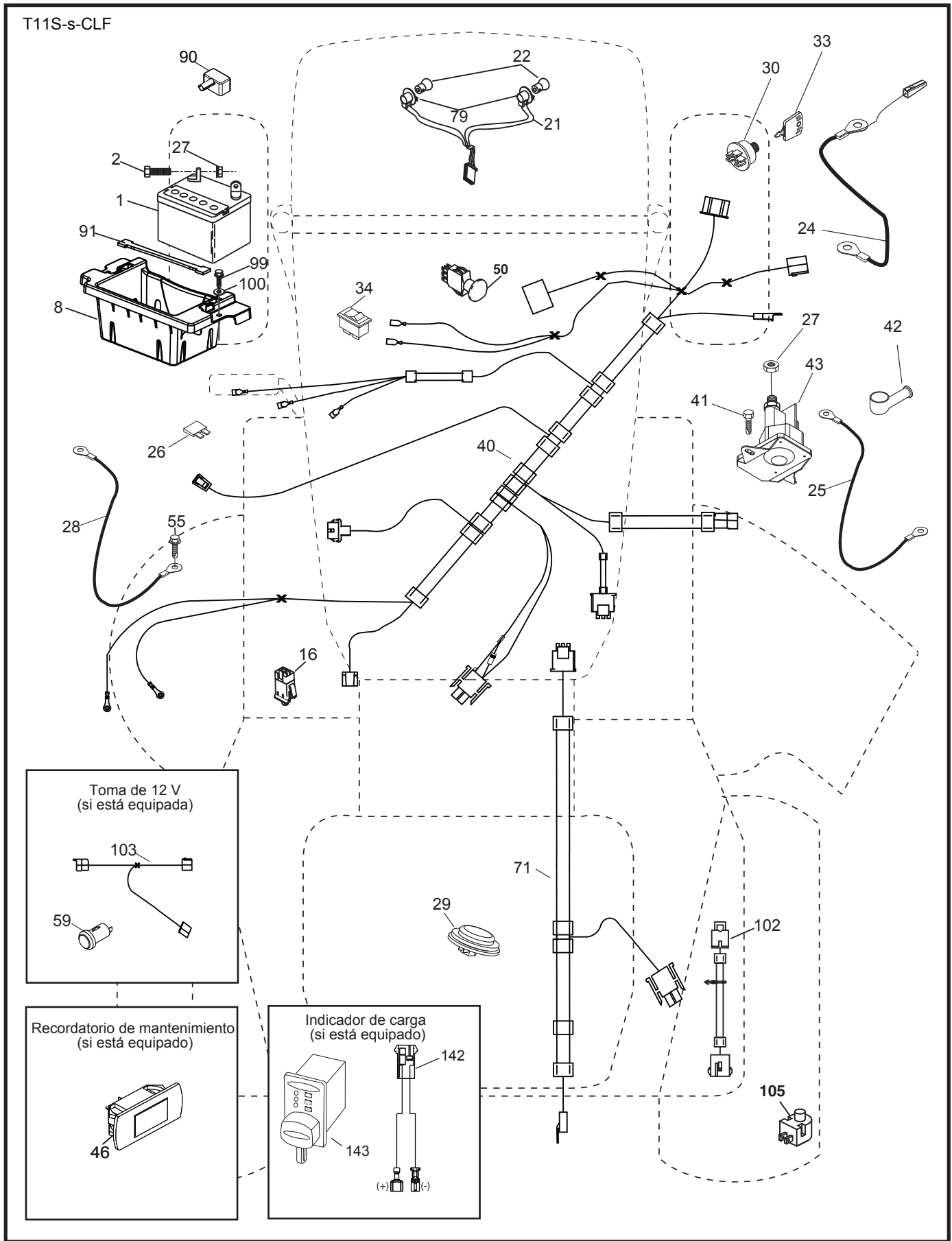


NOTA SOBRE LAS ABRAZADERAS DE AISLAMIENTO DEL CABLEADO: SI SE QUITAN LAS ABRAZADERAS DE AISLAMIENTO DEL CABLEADO PARA HACER EL MANTENIMIENTO DE LA UNIDAD, SE LAS DEBERÁ INSTALAR NUEVAMENTE PARA PROTEGER EL CABLEADO ADECUADAMENTE.



TRACTOR - MODELO NO. YTA24V48 (96045005400), PRODUCT NO. 960 45 00-54

DIAGRAMA ELÉCTRICO

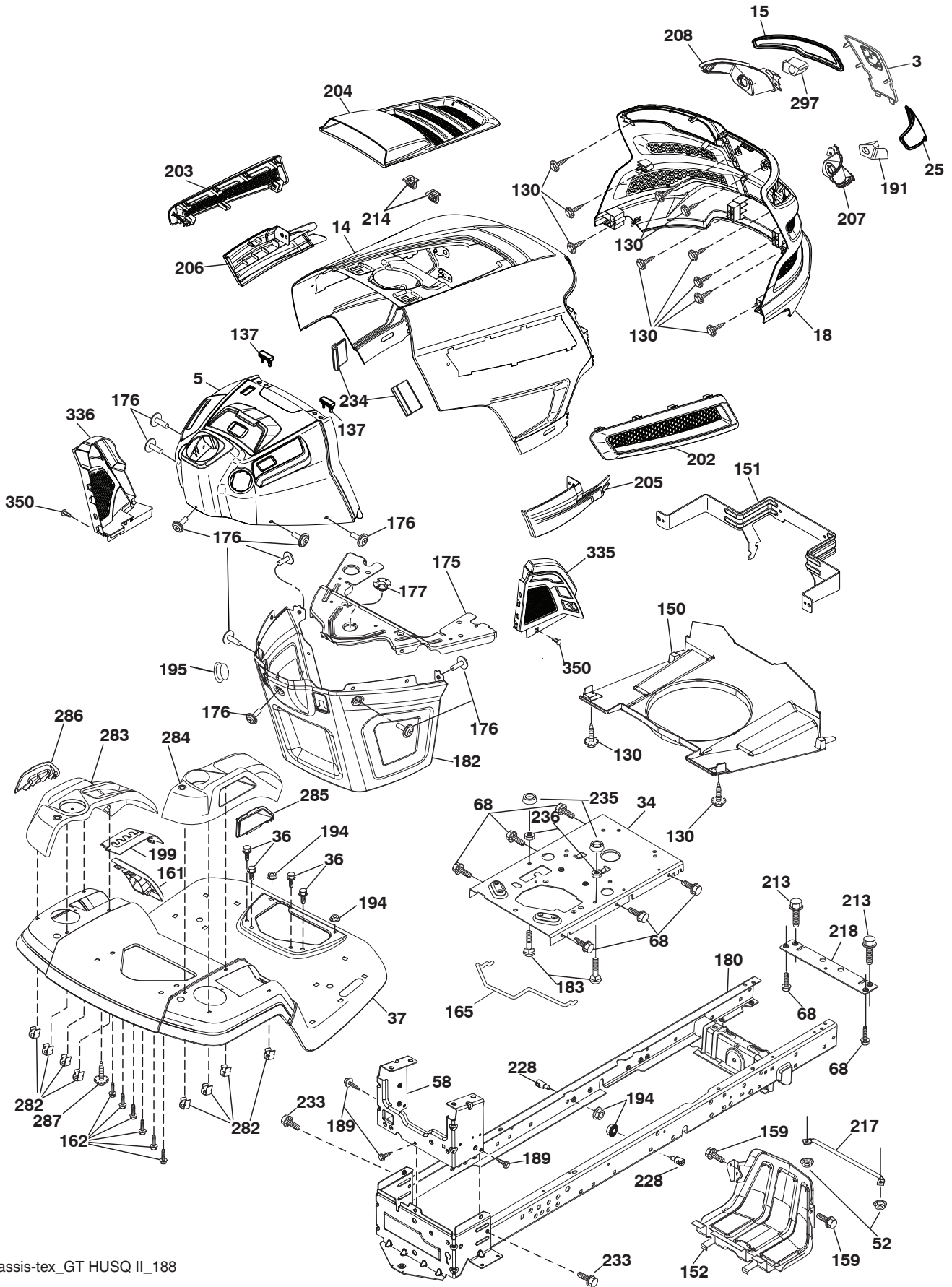


TRACTOR - MODELO NO. YTA24V48 (96045005400), PRODUCT NO. 960 45 00-54
DIAGRAMA ELÉCTRICO

| CÓDIGO No. | PIEZA No. | DESCRIPCIÓN |
|-------------------|------------------|---|
| 1 | 532 16 34-65 | Batería |
| 2 | 874 76 04-12 | Perno de cabeza hexagonal de 1/4-20 x 3/4 |
| 8 | 532 41 41-26 | Caja de la batería |
| 16 | 532 17 61-38 | Interruptor corta corriente a presión |
| 21 | 532 40 02-52 | Cableado del enchufe para la luz |
| 22 | 532 00 41-52 | Bombilla de luz #1156 |
| 24 | 585 55 56-01 | Cable |
| 25 | 585 55 55-01 | Cable |
| 26 | 532 17 51-58 | Fusible |
| 27 | 873 51 04-00 | Tuerca hexagonal Keps de 1/4-20 unc |
| 28 | 532 41 65-88 | Cable a tierra 21" negro Calibre 6 |
| 29 | 532 40 15-45 | Interruptor del asiento |
| 30 | 532 19 33-50 | Interruptor de encendido |
| 33 | 532 41 19-33 | Llave/cadena |
| 34 | 532 11 07-12 | Interruptor de luz/de restauración |
| 40 | 532 40 11-04 | Cableado del tablero de encendido |
| 41 | 817 72 04-08 | Tornillo |
| 42 | 532 13 15-63 | Cubierta de la terminal, rojo |
| 43 | 532 19 25-07 | Solenoide |
| 46 | 586 16 18-01 | Indicador SRVCMNDR HRMTR |
| 50 | 532 19 61-12 | Interruptor PTO |
| 55 | 817 06 05-12 | Tornillo 5/16-18 x 3/4 |
| 71 | 532 19 42-76 | Cableado del tablero |
| 79 | 532 17 52-42 | Enchufe de cierre por torsión del ensamble de la bombilla |
| 90 | 532 43 53-95 | Tapa de los bornes de la batería |
| 91 | 532 19 02-70 | Correa de batería |
| 99 | 817 67 04-12 | Tornillo 1/4-20 x 3/4 |
| 100 | 819 09 14-16 | Arandela 9/32 x 7/8 x Calibre 16 |
| 102 | 581 02 34-01 | Cableado |
| 105 | 532 40 75-68 | Interruptor para retroceder TT control del pedal |

NOTA: Las dimensiones de todos los componentes están expresadas en pulgadas americanas. 1 pulgada = 25,4 mm

TRACTOR - MODELO NO. YTA24V48 (96045005400), PRODUCT NO. 960 45 00-54
CHASIS



chassis-tex_GT HUSQ II_188

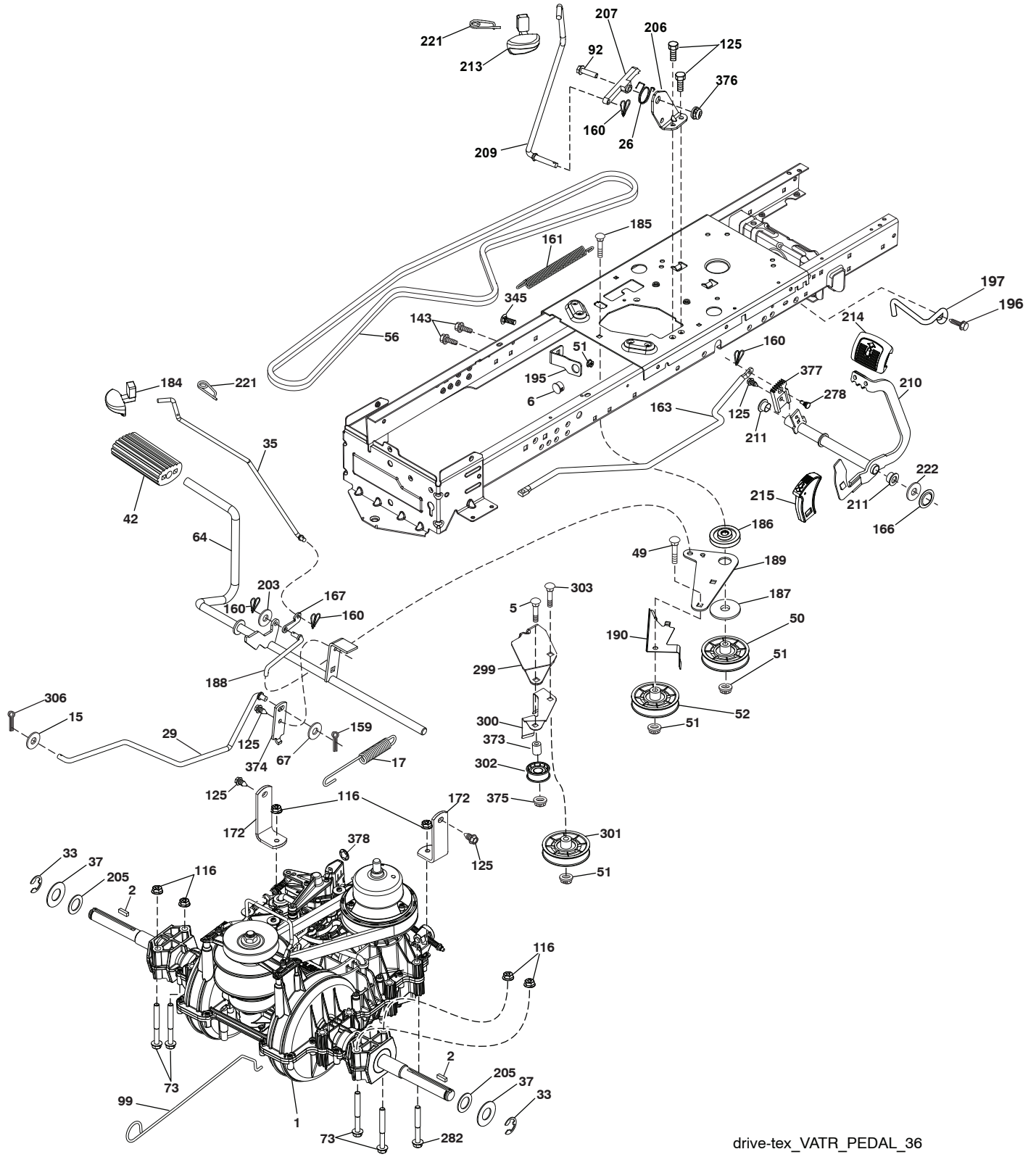
TRACTOR - MODELO NO. YTA24V48 (96045005400), PRODUCT NO. 960 45 00-54

CHASIS

| CÓDIGO No. | PIEZA No. | DESCRIPCIÓN | CÓDIGO No. | PIEZA No. | DESCRIPCIÓN |
|------------|--------------|---------------------------------|------------|--------------|--|
| 3 | 532 44 44-81 | Logo | 206 | 532 43 97-29 | Camisa de Capota (LI) |
| 5 | 581 46 69-03 | Tablero | 207 | 532 43 97-34 | Bisel derecho (LD) |
| 14 | 532 44 11-77 | Capota | 208 | 532 43 97-35 | Bisel izquierdo (LI) |
| 15 | 532 43 97-33 | Lente izquierdo de la parrilla | 213 | 874 76 05-12 | Perno 5/16-18 unc x 3/4 |
| 18 | 532 44 06-53 | Parrilla | 214 | 532 19 91-45 | Cierre |
| 25 | 532 44 33-85 | Lente derecho de la parrilla | 217 | 532 40 91-67 | Varilla giratoria |
| 34 | 580 91 08-01 | Chapa Motor | 218 | 532 19 63-95 | Tope |
| 36 | 817 06 05-12 | Tornillo de 5/16-18 x 3/4 | 228 | 532 19 51-61 | Sujetador del travesaño |
| 37 | 532 44 11-78 | Guardabarros | 233 | 532 19 65-39 | Tornillo |
| 52 | 873 68 05-00 | Tuerca de presión 5/16-18 | 234 | 532 40 47-42 | Cubierta Capota |
| 58 | 532 41 22-80 | Barra de enganche | 235 | 532 40 61-29 | Separador del guardabarros |
| 68 | 817 49 05-08 | Tornillo de 5/16-18 x 1/2 | 236 | 873 93 05-00 | Tuerca de presión 5/16-18 unc |
| 130 | 532 41 63-58 | Tornillo No. 10 x 0,75 | 282 | 532 41 41-10 | Abrazadera de retención |
| 137 | 532 40 75-90 | Cubierta Tablero | 283 | 532 43 98-61 | Ensamble de la consola de la plataforma de elevación |
| 150 | 532 43 97-74 | Cubierta térmica del conducto | | | Consola |
| 151 | 532 40 78-07 | Soporte pivotante | 284 | 532 43 98-23 | Inserto del Consola (LD) |
| 152 | 532 43 60-86 | Protector contra oscurecimiento | 285 | 532 41 63-15 | Inserto del Consola (LI) |
| 159 | 817 00 06-12 | Tornillo 3/8-16 x 3/4 | 286 | 532 41 63-17 | Tornillo 1/4 - 20 x 3/8 |
| 161 | 532 43 97-81 | Ventana de combustible | 287 | 817 60 04-06 | Parrilla reflectora LI |
| 162 | 532 14 24-32 | Tornillo | 297 | 532 43 74-56 | Cubierta LD |
| 165 | 532 19 68-26 | Tanque de combustible, trasero | 335 | 532 44 82-04 | Cubierta LI |
| 175 | 532 19 63-04 | Travesaño | 336 | 532 44 53-09 | Cierre del árbol de navidad |
| 176 | 532 40 07-76 | Tornillo 10-24 x 5/8 | 350 | 532 44 51-43 | |
| 177 | 532 19 52-28 | Buje de dirección | | | |
| 180 | 532 41 50-63 | Chasis | | | |
| 182 | 532 40 68-59 | Tablero inferior | | | |
| 183 | 874 52 05-20 | Perno 5/16-18 x 1-1/4 | | | |
| 189 | 817 00 05-12 | Tornillo 5/16-18 x 3/4 | | | |
| 191 | 532 43 74-55 | Parrilla reflectora LD | | | |
| 194 | 873 90 05-00 | Tuerca de presión de 5/16-18 | | | |
| 195 | 532 40 41-37 | Tapón | | | |
| 199 | 532 41 34-85 | Chapa | | | |
| 202 | 532 43 97-28 | Salida de Ventilación (LD) | | | |
| 203 | 532 43 97-27 | Salida de Ventilación (LI) | | | |
| 204 | 532 43 57-14 | Salida de Ventilación superior | | | |
| 205 | 532 43 97-30 | Camisa de Capota (LD) | | | |

NOTA: Las dimensiones de todos los componentes están expresadas en pulgadas americanas. 1 pulgada = 25,4 mm

TRACTOR - MODELO NO. YTA24V48 (96045005400), PRODUCT NO. 960 45 00-54
 TRANSMISIÓN



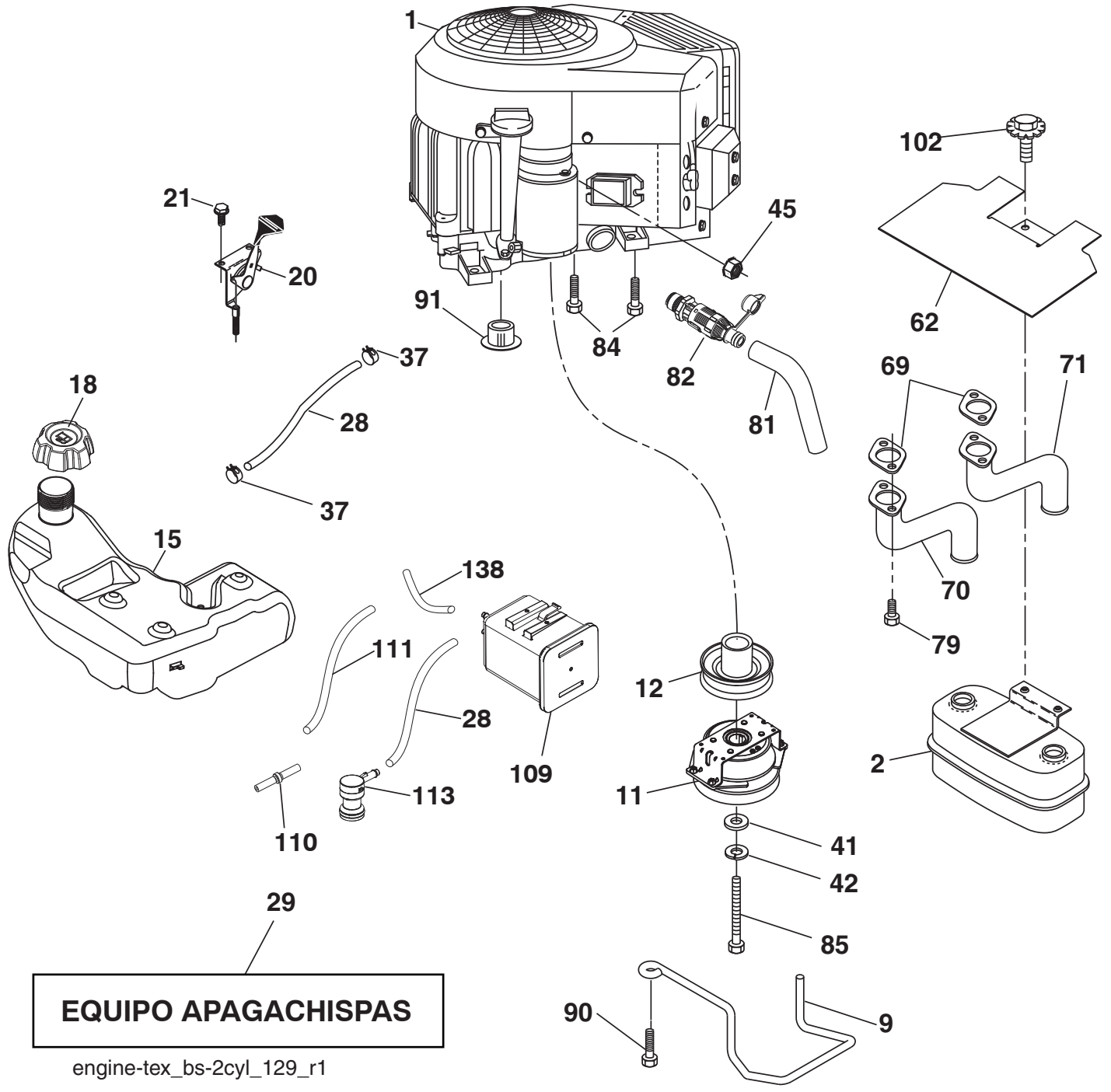
drive-tex_VATR_PEDAL_36

TRACTOR - MODELO NO. YTA24V48 (96045005400), PRODUCT NO. 960 45 00-54

TRANSMISIÓN

| CÓDIGO NO. | PIEZA NO. | DESCRIPCIÓN | CÓDIGO NO. | PIEZA NO. | DESCRIPCIÓN |
|------------|--------------|---|------------|--------------|---|
| 1 | --- | Transeje, Varitor SD Pedal (584973901) (Haga el pedido de las piezas al fabricante del transeje.) | 189 | 532 19 43-17 | Palanca acodada del mecanismo de desplazamiento |
| 2 | 532 12 35-83 | Cuña | 190 | 532 19 43-18 | Sujetador de la palanca acodada del mecanismo de desplazamiento |
| 5 | 874 76 06-36 | Perno de HS 3/8-16 unc | 195 | 581 50 46-01 | Soporte del freno |
| 6 | 532 12 40-28 | Buje | 196 | 817 00 06-16 | Tornillo 3/8-16 x 1 |
| 15 | 819 13 13-16 | Arandela de 13/32 x 13/16 x calibre 16 | 197 | 585 65 86-01 | Varilla |
| 17 | 584 95 40-01 | Resorte de freno | 203 | 819 11 11-16 | Arandela de 11/32 x 11/16 x calibre 16 |
| 26 | 532 19 96-79 | Crucero con retorno de muelle | 205 | 532 12 17-48 | Arandela de 25/32 x 1-5/8 x calibre 16 |
| 29 | 584 82 31-01 | Varilla del freno | 206 | 532 44 85-96 | Soporte de montaje del bloqueo del crucero |
| 33 | 812 00 00-01 | Aro E | 207 | 532 44 82-64 | Bloqueo del control del crucero |
| 35 | 583 86 45-01 | Varilla del freno de mano | 209 | 532 19 95-92 | Varilla de control del crucero |
| 37 | 532 18 89-67 | Arandela de .793 x 1.637 x 060 | 210 | 532 44 82-70 | Ensamble del pedal |
| 42 | 532 12 48-72 | Cubierta del pedal | 211 | 532 12 01-83 | Rodamiento de nylon |
| 49 | 872 11 06-14 | Perno de 3/8-16unc x1-3/4 grado 5 | 213 | 532 40 31-19 | Perilla de control del crucero |
| 50 | 532 19 43-27 | Polea loca plana | 214 | 532 42 12-63 | Forro del pedal para avanzar |
| 51 | 873 90 06-00 | Tuerca 3/8-16 | 215 | 532 44 82-54 | Forro del pedal para retroceder |
| 52 | 532 19 43-26 | Polea loca con ranura en V con un desplazamiento | 221 | 532 40 31-87 | Abrazadera de retención del resorte de la manija |
| 56 | 532 19 72-53 | Correa de la transmisión | 222 | 879 21 20-10 | Arandela de 21/32 x 1-1/4 calibre 10 |
| 64 | 532 44 83-53 | Ensamble del eje Control del pedal de freno | 278 | 580 36 91-01 | Perno |
| 67 | 819 13 13-12 | Arandela de 13/32 x 13/16 x calibre 12 | 282 | 874 49 05-48 | Tornillo de 5/16-18 x 3 |
| 73 | 874 49 05-44 | Perno de 5/16-18 grado 5 | 299 | 532 41 56-83 | Soporte |
| 92 | 874 76 05-20 | Perno | 300 | 532 41 56-81 | Polea loca Sujetador |
| 99 | 532 43 59-35 | Varilla del con resorte de desviación | 301 | 532 41 56-80 | Polea loca plana |
| 116 | 873 90 05-00 | Tuerca 5/16-18 unc | 302 | 581 42 05-01 | Polea loca plana 2.0 Od |
| 125 | 817 00 05-12 | Tornillo de 5/16-18 x 3/4 | 303 | 872 11 06-18 | Perno |
| 143 | 817 49 05-08 | Tornillo de 5/16-18 x 1/2 Tytt | 306 | 876 02 04-16 | Pasador de chaveta de 1/8 x1 |
| 159 | 876 02 04-12 | Pasador de chaveta de 1/8 x 3/4 | 345 | 872 11 06-06 | Perno de 3/8-16 x 1 grado 5 |
| 160 | 532 16 94-84 | Abrazadera de retención | 373 | 581 46 18-01 | Separador |
| 161 | 532 10 57-09 | Resorte de retorno del embrague 6.75 | 374 | 581 47 52-01 | Soporte |
| 163 | 587 84 79-02 | Varilla de control del pedal | 375 | 873 68 06-00 | Tuerca 3/8-16 unc |
| 166 | 532 42 91-64 | Tuerca de presión .625 | 376 | 532 42 65-89 | Tuerca |
| 167 | 532 40 52-57 | Pestillo del freno de mano | 377 | 584 30 34-01 | Crucero con Engranaje del sector |
| 172 | 583 97 42-01 | Correa de torsión (LI)/(LD) | 378 | 584 28 77-01 | Tuerca 8mm |
| 184 | 587 65 37-01 | Manija del freno de mano | | | |
| 185 | 872 11 06-22 | Perno de 3/8-16 unc x 2-3/4 grado 5 | | | |
| 186 | 532 19 43-21 | Espaciador de retención | | | |
| 187 | 819 13 32-10 | Arandela de 13/32 x 2 x calibre 10 | | | |
| 188 | 532 19 43-23 | Mecanismo de desplazamiento de la varilla de mando del embrague | | | |

NOTA: Las dimensiones de todos los componentes están expresadas en pulgadas americanas.
1 pulgada = 25,4 mm



**TRACTOR - MODELO NO. YTA24V48 (96045005400), PRODUCT NO. 960 45 00-54
MOTOR**

| CÓDIGO No. | PIEZA No. | DESCRIPCIÓN |
|-------------------|------------------|--|
| 1 | ----- | Motor Briggs modelo No. 44R877-0001-G1 (585910001) (Haga el pedido de las piezas al fabricante del motor.) |
| 2 | 532 44 59-62 | Silenciador |
| 9 | 584 91 16-01 | Ensamble del sujetador de la correa del motor |
| 11 | 587 24 16-01 | Embrague de eléctrico |
| 12 | 532 40 29-80 | Polea del motor |
| 15 | 532 41 41-51 | Tanque de combustible |
| 18 | 585 12 48-01 | Ensamble de la tapa |
| 20 | 587 24 25-01 | Control del regulador |
| 21 | 532 41 63-58 | Tornillo #10 x 0.750 |
| 28 | 532 40 11-35 | Línea de combustible |
| 29 | 532 13 71-80 | Equipo apagachispas |
| 37 | 532 12 34-87 | Abrazadera de la manguera |
| 41 | 532 12 61-97 | Arandela 1-1/2 OD x 15/32 ID x .250 |
| 42 | 810 04 07-00 | Arandela 7/16 |
| 45 | 873 51 04-00 | Tuerca 1/4-20 unc |
| 62 | 532 43 40-17 | Silenciador con pantalla térmica |
| 69 | 532 16 53-91 | Junta |
| 70 | 581 88 11-01 | Tubo de escape(L.I.) |
| 71 | 581 88 10-01 | Tubo de escape (L.D.) |
| 79 | 532 18 39-06 | Tornillo 5/16-18 x 1 |
| 81 | 532 14 84-56 | Tubo de fácil drenaje de aceite |
| 82 | 532 42 82-87 | Aceite drenaje válvula |
| 84 | 817 06 06-20 | Tornillo 3/8-16 x 1-1/4 |
| 85 | 532 17 99-53 | Perno 7/16-20 x 3.75 Gr. |
| 90 | 817 00 06-16 | Tornillo 3/8-16 x 1 |
| 91 | 532 18 79-45 | Buje |
| 102 | 817 00 05-12 | Tornillo 5/16-18 x 3/4 |
| 109 | 532 41 41-14 | Bote |
| 110 | 532 41 41-18 | Válvula |
| 111 | 532 41 41-19 | Línea de purge |
| 113 | 532 41 41-27 | Válvula |
| 138 | 532 42 07-18 | Línea de purge |

NOTA: Las dimensiones de todos los componentes están expresadas en pulgadas americanas. 1 pulgada = 25,4 mm

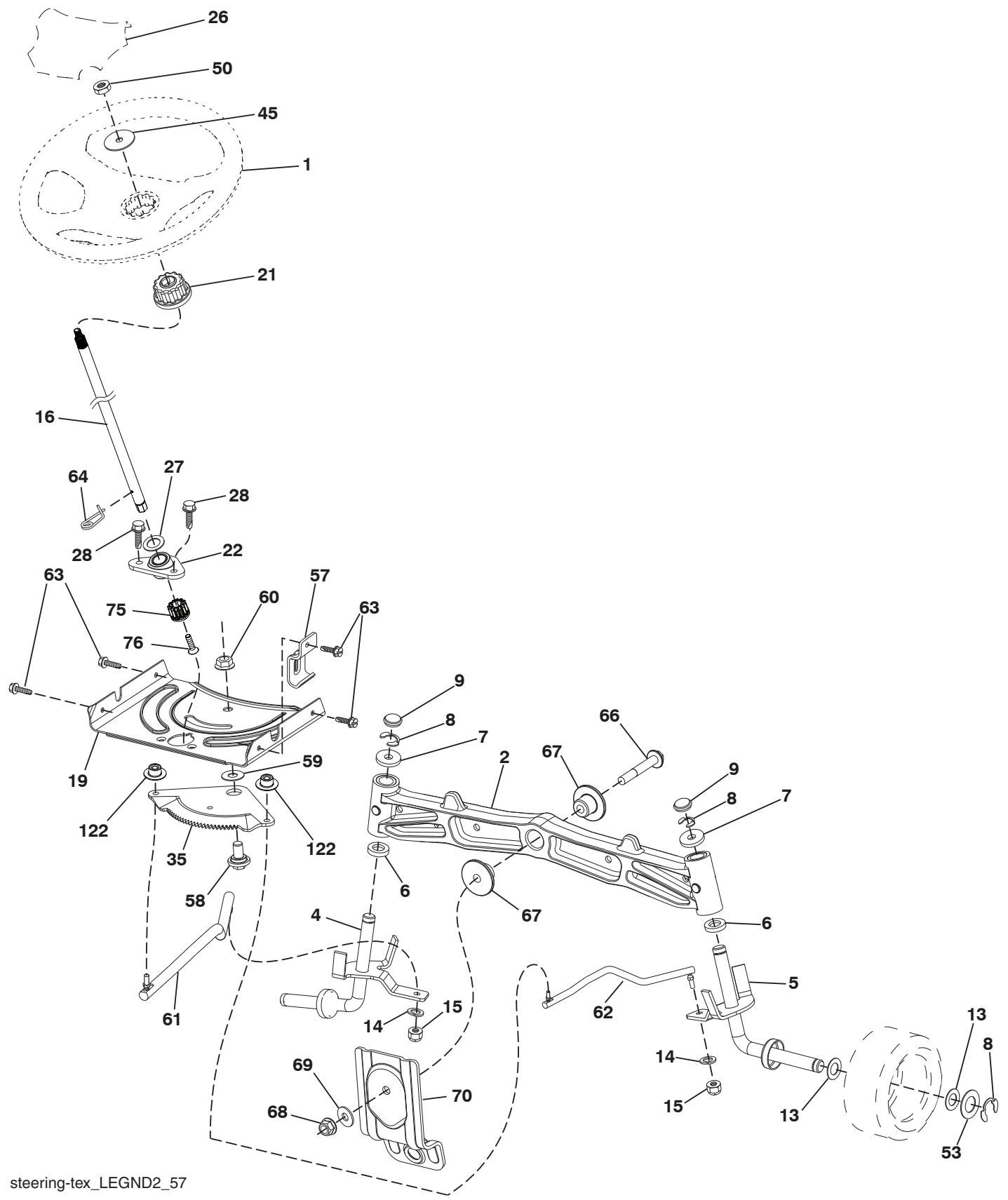
Para el servicio de motor y repuestos, llame el número de llamada gratuita para su fabricante de motor listó abajo:

Briggs & Stratton 1-800-233-3723

Información de Clasificación de Potencia del Motor

La clasificación de potencia para un modelo de motor a gas en particular se designa de acuerdo al código J1940 de SAE (Sociedad de Ingenieros Automotrices) (Procedimiento de Clasificación de Potencia & Torque del Motor Pequeño), y la clasificación de desempeño ha sido obtenida y corregida de acuerdo con el código J1995 de SAE (Revisión 2002-05). Los valores de torque se obtienen a 3060 RPM; los valores de potencia se obtienen a 3600 RPM. La potencia bruta actual del motor será inferior y está afectada, entre otras cosas, por las condiciones ambientales operativas y la variabilidad de motor a motor. Dado ambos un amplio conjunto de productos en los cuales son puestos nuestros motores, y la variedad de emisiones ambientales aplicables al operar el equipo, el motor a gas no desarrollará la potencia nominal cuando sea usado en una parte del equipo acoplado (potencia real "en el-sitio" o potencia neta). Esta diferencia se debe a una variedad de factores que incluyen, pero que no están limitados a, accesorios (filtro de aire, sistema de escape, sistema de carga, sistema de enfriamiento, carburador, bomba de combustible, etc.) limitaciones de la aplicación, condiciones ambientales de operación (temperatura, humedad, altitud), y la variabilidad de motor a motor. Debido a las limitaciones, Briggs & Stratton puede sustituir este motor con clasificación de potencia más alta por esta serie de motor.

TRACTOR - MODELO NO. YTA24V48 (96045005400), PRODUCT NO. 960 45 00-54
ENSAMBLE DE LA DIRECCIÓN



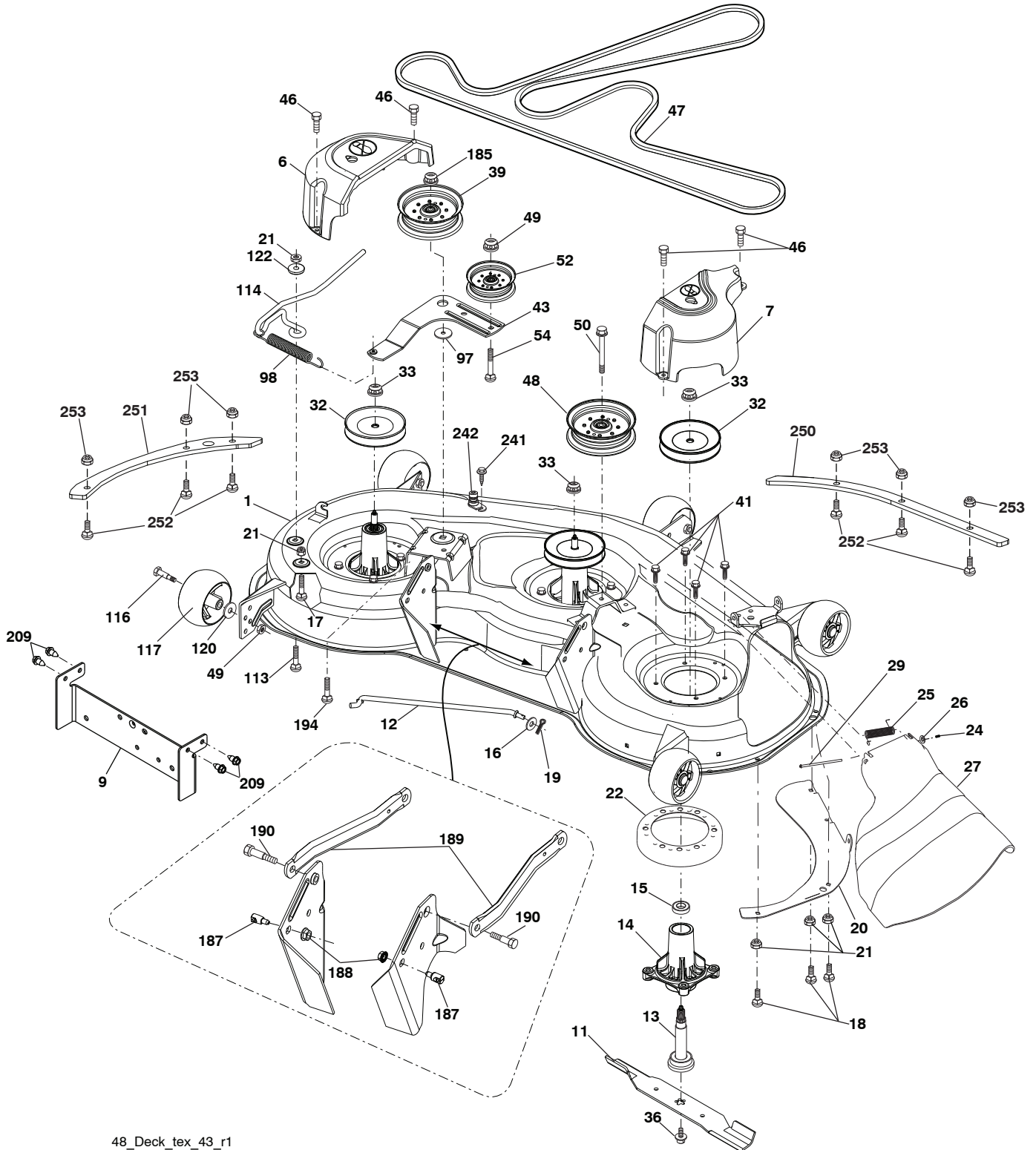
steering-tex_LEGND2_57

**TRACTOR - MODELO NO. YTA24V48 (96045005400), PRODUCT NO. 960 45 00-54
ENSAMBLE DE LA DIRECCIÓN**

| CÓDIGO No. | PIEZA No. | DESCRIPCIÓN |
|-------------------|------------------|---|
| 1 | 532 43 97-40 | Volante de dirección |
| 2 | 532 19 59-68 | Eje delantero |
| 4 | 532 40 30-87 | Ensamble del husillo izquierdo |
| 5 | 532 40 30-88 | Ensamble del husillo derecho |
| 6 | 532 12 49-31 | Pista del rodamiento para reforzar el impulso |
| 7 | 532 12 17-48 | Arandela 25/32 x 1-5/8 x Calibre 16 |
| 8 | 812 00 00-29 | Abrazadera del aro No. T5304-75 |
| 9 | 532 12 12-32 | Tapa del husillo |
| 13 | 532 12 17-49 | Arandela 25/32 x 1-1/4 x Calibre 16 |
| 14 | 810 04 06-00 | Arandela 3/8 |
| 15 | 873 54 06-00 | Tuerca corona de presión de 3/8-24 unf |
| 16 | 587 01 60-02 | Eje de dirección |
| 19 | 532 19 47-29 | Placa de dirección |
| 21 | 586 84 02-01 | Adaptador del volante de dirección |
| 22 | 585 02 98-02 | Rodamiento |
| 26 | 532 43 97-43 | Inserto del volante de dirección |
| 27 | 819 21 16-16 | Arandela |
| 28 | 817 00 06-12 | Tornillo 3/8-16 x 3/4 |
| 35 | 532 19 47-32 | Engranaje del sector de la placa |
| 45 | 587 01 64-01 | Arandela 3/8 ID 2-3/8 OD calibre 12 PLTD |
| 50 | 873 90 06-00 | Tuerca 3/8-16 unc |
| 53 | 532 18 89-67 | Arandela .793 x 1.637 x .060 |
| 57 | 532 19 72-46 | Tope superior del soporte |
| 58 | 532 19 47-47 | Perno de tope del sector del pivote CFM |
| 59 | 532 19 47-48 | Arandela de empuje del sector de dirección |
| 60 | 873 97 10-00 | Tuerca de presión con brida de 5/8-11 |
| 61 | 532 19 47-40 | Barra de acoplamiento izquierda |
| 62 | 532 19 47-41 | Barra de acoplamiento derecha |
| 63 | 817 00 05-12 | Tornillo 5/16-18 x 3/4 |
| 64 | 532 19 98-49 | Abrazadera de retención del resorte de la dirección |
| 66 | 871 02 07-48 | Perno de cabeza 7/16-14 x 3 |
| 67 | 532 19 47-37 | Buje PM del eje delantero |
| 68 | 873 90 07-00 | Tuerca de presión con brida de 7/16-14 grado 5 |
| 69 | 532 19 91-62 | Arandela 1.5 x .505 x .118 |
| 70 | 585 33 88-01 | Soporte de la plataforma delantera |
| 75 | 580 68 37-02 | Piñón |
| 76 | 580 68 36-01 | Tornillo |
| 122 | 532 44 49-62 | Tapa |

NOTA: Las dimensiones de todos los componentes están expresadas en pulgadas americanas. 1 pulgada = 25,4 mm

TRACTOR - MODELO NO. YTA24V48 (96045005400), PRODUCT NO. 960 45 00-54
PLATAFORMA DE LA CORTADORA DE CÉSPED



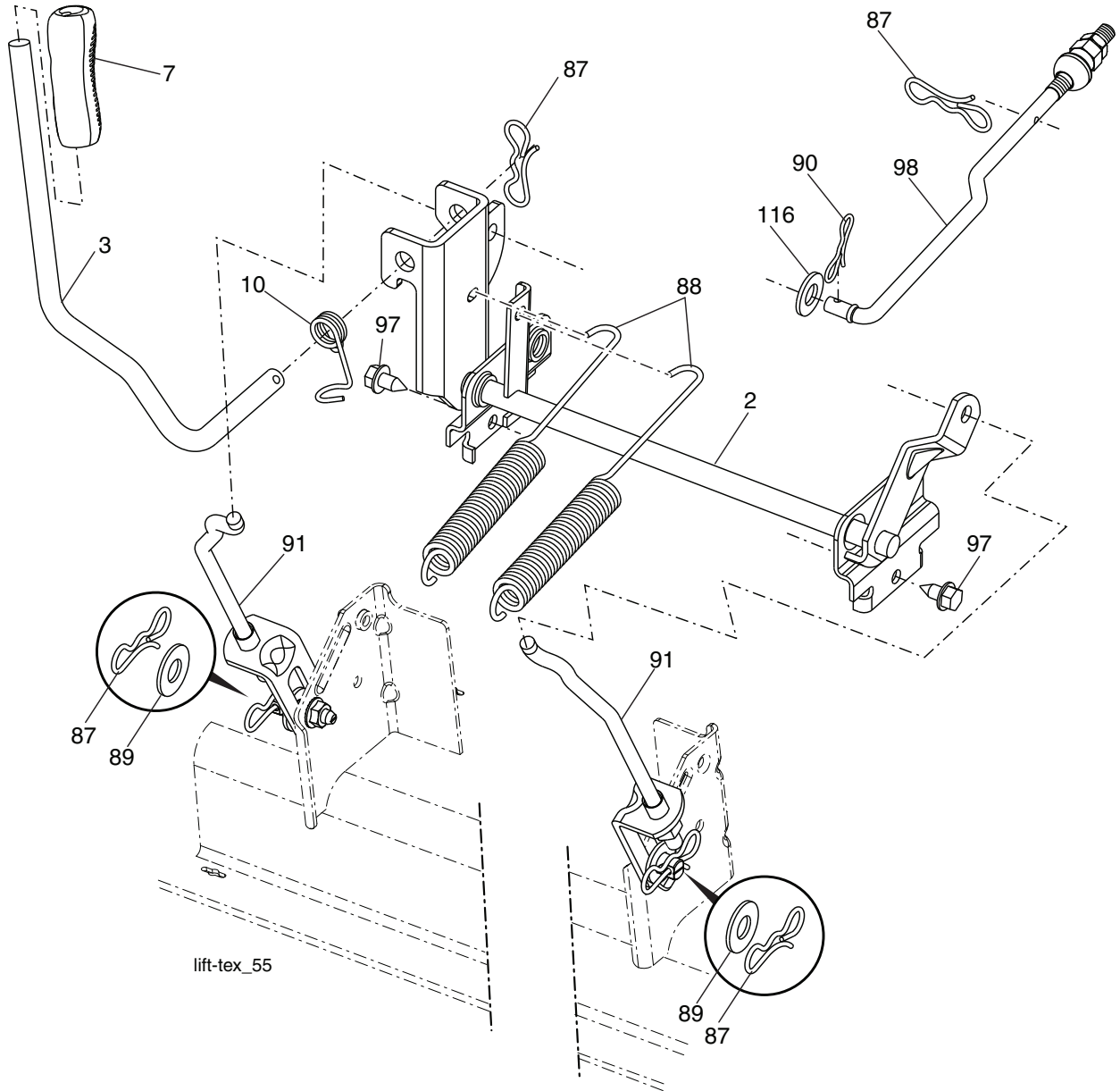
48_Deck_tex_43_r1

**TRACTOR - MODELO NO. YTA24V48 (96045005400), PRODUCT NO. 960 45 00-54
PLATAFORMA DE LA CORTADORA DE CÉSPED**

| CÓDIGO No. | PIEZA No. | DESCRIPCIÓN | CÓDIGO No. | PIEZA No. | DESCRIPCIÓN |
|-------------------|------------------|---|-------------------|------------------|---|
| 1 | 532 44 12-93 | Carcasa de la cortadora de césped | 98 | 532 19 61-05 | Accionamiento por resortes |
| 6 | 532 19 72-48 | Cubierta izquierda del mandril | 113 | 872 11 05-08 | Perno 5/16-18 x 3/4 |
| 7 | 587 45 24-01 | Cubierta derecha del mandril | 114 | 532 19 74-51 | Varilla |
| 9 | 583 97 07-01 | Soporte | 116 | 532 19 34-06 | Perno de tope |
| 11 | 532 18 00-54 | Cuchilla de la cortadora | 117 | 532 17 48-73 | Calibrador de la rueda |
| 12 | 532 40 48-51 | Varilla | 120 | 819 13 20-12 | Arandela 13/32 x 1-1/4 x calibre 12 |
| 13 | 532 18 72-91 | Ensamble del eje. con rodamiento inferior | 122 | 532 18 75-57 | Buje |
| 14 | 532 18 72-81 | Carcasa del mandril | 185 | 873 90 07-00 | Tuerca de presión con brida 7/16-14 grado 5 |
| 15 | 532 11 04-85 | Rodamiento de bolas del mandril | 187 | 532 19 51-61 | Sujetador del travesaño |
| 16 | 819 13 13-12 | Arandela 13/32 x 13/16 x calibre 12 | 188 | 873 90 05-00 | Tuerca de presión hexagonal con brida |
| 17 | 872 11 05-05 | Perno 5/16-18 x 5/8 | 189 | 532 19 51-85 | Brazo de la suspensión trasera |
| 18 | 872 14 05-05 | Perno 5/16-18 unc x 5/8 | 190 | 532 19 65-39 | Perno de tope |
| 19 | 532 19 42-08 | Pasador de chaveta de 5/16 con bloqueo en forma de mariposa | 194 | 874 49 07-36 | Perno 7/16-24 |
| 20 | 532 17 43-78 | Torbellino de deflector | 209 | 817 00 05-12 | Tornillo 5/16-18 x 3/4 |
| 21 | 873 68 05-00 | Tuerca 5/16-18 unc | 241 | 532 15 29-27 | Tornillo TT #10-32.5 3/8 |
| 22 | 532 17 44-93 | Separador de mandril | 242 | 532 41 55-98 | Puerto de Lavado de la Cubierta |
| 24 | 532 10 53-04 | Tapa de la manga | 250 | 585 31 80-05 | Placa de refuerzo frontal |
| 25 | 532 17 81-02 | Resorte de torsión | 251 | 585 32 24-05 | Placa de refuerzo lateral |
| 26 | 532 11 04-52 | Tuerca | 252 | 539 10 98-00 | Perno 1/4-20 x1 grado 5 |
| 27 | 532 18 17-07 | Protector del deflector | 253 | 873 90 04-00 | Tuerca 1/4-20 unc |
| 29 | 532 13 14-91 | Varilla de la bisagra | -- | 587 12 54-01 | Ensamble del Mandril (solo incluye la carcasa (#14), el ensamble del eje (#13) y el rodamiento (#15); no incluye la polea/tuerca/arandela ni los pernos/arandelas de la cuchilla) |
| 32 | 532 15 35-32 | Polea del mandril | -- | 532 41 64-05 | Accesorio del conexión |
| 33 | 532 40 02-34 | Tuerca de presión con brida | -- | 532 41 82-23 | Reemplazo de la cortadora de césped, completa |
| 36 | 584 30 93-01 | Tornillo 7/16-20 x 1 | | | |
| 39 | 532 19 73-80 | Polea loca 4.50 | | | |
| 41 | 584 95 39-01 | Perno 313-18 x 1.19 | | | |
| 43 | 532 19 60-65 | Brazo de la polea | | | |
| 46 | 532 13 77-29 | Tornillo 1/4-20 x 5/8 | | | |
| 47 | 532 19 72-42 | Correa de la transmisión | | | |
| 48 | 532 19 73-79 | Polea loca 4.50 RAW | | | |
| 49 | 873 90 06-00 | Tuerca de presión con brida 3/8-16 unc | | | |
| 50 | 817 49 06-36 | Tornillo TT 3/8-16 x 2-1/4 | | | |
| 52 | 532 19 31-97 | Polea loca primaria 48" | | | |
| 54 | 872 11 06-12 | Perno 3/8-16 x 1-1/2 grado 5 | | | |
| 97 | 532 17 85-15 | Arandela | | | |

NOTA: Las dimensiones de todos los componentes están expresadas en pulgadas americanas. 1 pulgada = 25,4 mm

TRACTOR - MODELO NO. YTA24V48 (96045005400), PRODUCT NO. 960 45 00-54
ELEVACIÓN DE LA CORTADORA DE CÉSPED

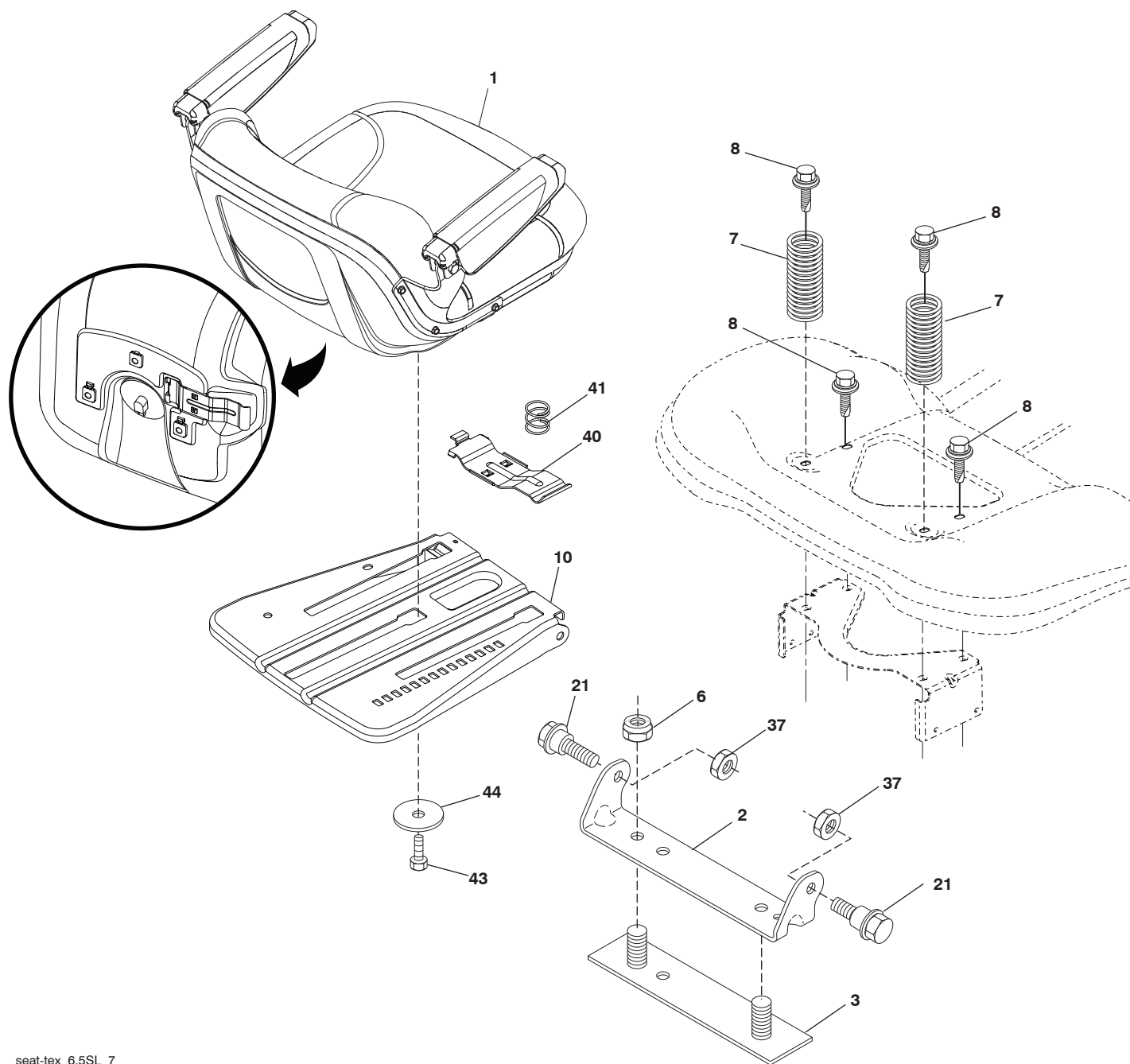


| CÓDIGO No. | PIEZA No. | DESCRIPCIÓN |
|------------|--------------|---|
| 2 | 532 42 20-27 | Ensamble del eje de la elevación |
| 3 | 532 19 52-31 | Ensamble de la palanca de elevación derecha |
| 7 | 580 96 23-01 | Mango de la palanca |
| 10 | 532 19 63-14 | Resorte de torsión |
| 87 | 532 19 42-09 | Pasador de chaveta de 7/16 con bloqueo en forma de mariposa |
| 88 | 532 41 07-10 | Resorte de ayuda de la elevación |
| 89 | 819 19 19-12 | Arandela de zinc transparente |
| 90 | 532 19 42-08 | Pasador de chaveta de 5/16 con bloqueo en forma de mariposa |

| CÓDIGO No. | PIEZA No. | DESCRIPCIÓN |
|------------|--------------|--|
| 91 | 532 19 51-81 | Ensamble del acoplamiento |
| 97 | 817 00 06-12 | Tornillo de 3/8-16 x 0,75 |
| 98 | 532 19 52-64 | Acoplamiento frontal de la elevación de la cortadora de césped |
| 116 | 819 15 15-16 | Arandela 15/32 x 15/16 x calibre 16 |

NOTA: Las dimensiones de todos los componentes están expresadas en pulgadas americanas. 1 pulgada = 25,4 mm

TRACTOR - MODELO NO. YTA24V48 (96045005400), PRODUCT NO. 960 45 00-54
ENSAMBLE DEL ASIENTO



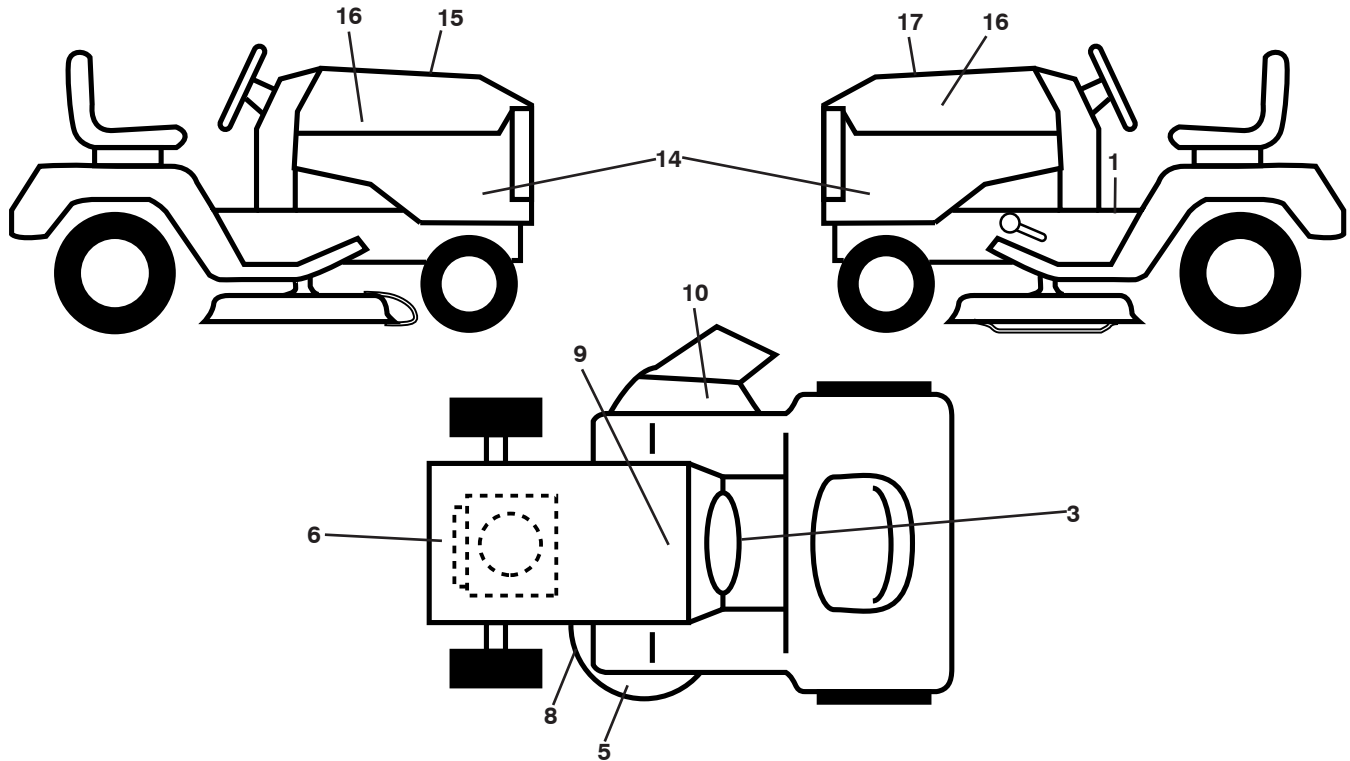
seat-tex_6.5SL_7

| CÓDIGO No. | PIEZA No. | DESCRIPCIÓN | CÓDIGO No. | PIEZA No. | DESCRIPCIÓN |
|------------|--------------|---|------------|--------------|---|
| 1 | 532 44 32-63 | Asiento | 37 | 873 80 05-00 | Tuerca de presión de 5/16-18 unc |
| 2 | 532 18 01-66 | Soporte pivotante del guardabarros | 40 | 532 19 76-61 | Manija para deslizar el asiento |
| 3 | 532 14 06-75 | Conector del ensamble del guardabarros | 41 | 532 19 82-00 | Resorte para trabar el asiento |
| 6 | 873 80 06-00 | Tuerca de presión c/aislamiento de 3/8-16 unc | 43 | 874 76 06-12 | Perno de cabeza hexagonal con aleta de 3/8-16 unc x 3/4 |
| 7 | 587 61 33-01 | Resorte del asiento | 44 | 819 13 38-12 | Arandela de 13/32 x 2-3/8 calibre 12 |
| 8 | 532 17 18-77 | Perno de 5/16" unc x 3/4" | | | |
| 10 | 532 19 69-77 | Bandeja del asiento | | | |
| 21 | 587 90 78-01 | Perno de tope de 5/16-18 x 5/8 | | | |

NOTA: Las dimensiones de todos los componentes están expresadas en pulgadas americanas. 1 pulgada = 25,4 mm

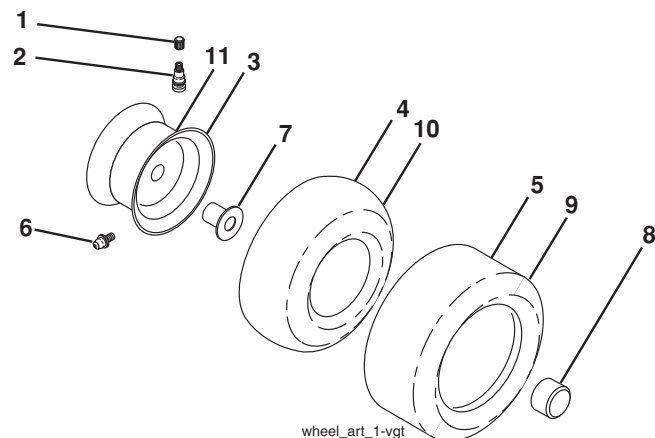
TRACTOR - MODELO NO. YTA24V48 (96045005400), PRODUCT NO. 960 45 00-54

CALCOMANÍAS



| CÓDIGO No. | PIEZA No. | DESCRIPCIÓN | CÓDIGO No. | PIEZA No. | DESCRIPCIÓN |
|------------|--------------|---|------------|--------------|--|
| 1 | 586 71 38-01 | Calcomanía para el guardabarros del operador | 16 | 581 62 73-01 | Calcomanía para el logo de la capota |
| 3 | 532 42 41-02 | Calcomanía precaución | 17 | 501 11 23-01 | Calcomanía de reemplazo |
| 5 | 581 72 45-02 | Calcomanía precaución | -- | 581 72 48-01 | Calcomanía para la desviación |
| 6 | 585 93 73-01 | Calcomanía H.P. | -- | 580 88 58-01 | Calcomanía de E85 advertencia |
| 8 | 581 58 00-02 | Calcomanía del diagrama de la cortadora de césped | -- | 532 43 96-81 | Forro del apoyo para los pies (LI) |
| 9 | 532 14 50-05 | Calcomanía de Peligro/Punto de interconexión | -- | 532 43 96-82 | Forro del apoyo para los pies (LD) |
| 10 | 584 90 46-01 | Calcomanía precaución | -- | 115 47 25-49 | Manual del operador (Inglés/Español) |
| 14 | 501 20 41-01 | Calcomanía para el panel lateral | -- | 115 47 26-49 | Manual De Repuestos (Inglés/Español) |
| 15 | 532 42 38-29 | Calcomanía responsabilidad del cliente | -- | 587 71 00-26 | Guía de inicio rápido (Inglés/Español) |

RUEDAS Y NEUMÁTICOS



| CÓDIGO No. | PIEZA No. | DESCRIPCIÓN |
|------------|--------------|--|
| 1 | 532 05 91-92 | Tapa de la válvula del neumático |
| 2 | 532 06 51-39 | Vástago de la válvula |
| 3 | 532 13 83-36 | Ensamble de las llantas delanteras |
| 4 | 532 05 99-04 | Cámara delantera (Mantenimiento sólo) |
| 5 | 532 10 62-22 | Neumático delantero 15 x 6-6 |
| 6 | 532 12 49-57 | Accesorio para engrasar (solo para la rueda delantera) |
| 7 | 532 12 49-59 | Rodamiento de la brida (solo para la rueda delantera) |
| 8 | 532 17 50-39 | Tapa del eje |
| 9 | 532 13 84-68 | Neumático trasero 20 x 8-8 |
| 10 | 532 12 49-26 | Cámara trasera (Mantenimiento sólo) |
| 11 | 532 13 83-37 | Ensamble trasero de la llanta |
| -- | 532 14 43-34 | Sellador para neumáticos (tubo de 10 onzas [283 gr]) |

NOTA: Las dimensiones de todos los componentes están expresadas en pulgadas americanas. 1 pulgada = 25,4 mm

SERVICE NOTES / AVISO

07/28/2015 BD